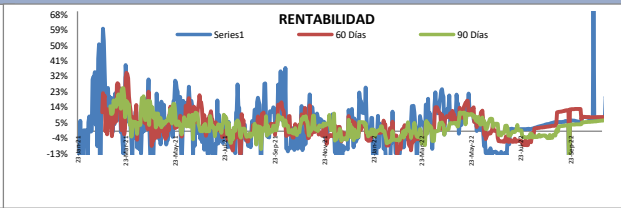
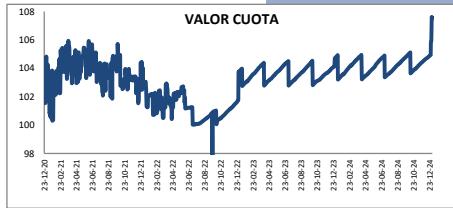


Fondo De inversión Cerrado Inmobiliario BHD Fondos I


Fecha	Patrimonio neto del Fondo	Valor Cuota	Rentabilidad Neta				
			30 días	60 días	90 días	180 días	360 días
1-Jan-25	24,787,456.03	107.551302	40.70%	33.51%	14.63%	2.98%	2.07%
31-Dec-24	24,782,622.37	107.530329	40.69%	33.53%	14.63%	2.77%	1.96%
30-Dec-24	24,803,255.16	107.619853	42.45%	34.15%	14.99%	6.19%	3.65%
29-Dec-24	24,405,041.25	105.892027	17.19%	21.79%	7.72%	3.02%	2.09%
28-Dec-24	24,401,344.18	105.875985	17.17%	21.77%	7.71%	3.02%	2.09%
27-Dec-24	24,397,647.20	105.859944	17.16%	21.79%	7.72%	4.76%	2.95%
26-Dec-24	24,184,545.53	104.935309	5.48%	15.67%	4.03%	3.05%	2.11%
25-Dec-24	24,180,823.23	104.919158	5.53%	15.69%	4.04%	3.05%	2.11%
24-Dec-24	24,177,157.16	104.903251	5.57%	15.71%	4.05%	3.05%	2.11%
23-Dec-24	24,173,444.41	104.887142	5.59%	15.73%	4.06%	3.05%	2.11%
22-Dec-24	24,169,737.15	104.871056	5.61%	15.75%	4.07%	3.05%	2.11%
21-Dec-24	24,165,652.72	104.853334	5.61%	15.75%	4.07%	3.05%	2.12%
20-Dec-24	24,161,568.35	104.835612	5.62%	15.78%	4.09%	3.05%	2.11%
19-Dec-24	24,157,717.49	104.818903	5.64%	15.79%	4.09%	3.05%	2.12%
18-Dec-24	24,153,816.01	104.801975	5.65%	15.81%	4.10%	3.05%	2.12%
17-Dec-24	24,149,541.16	104.783427	5.64%	15.81%	4.10%	3.04%	2.11%
16-Dec-24	24,146,899.75	104.771966	5.72%	15.86%	4.13%	3.04%	2.11%
15-Dec-24	24,144,041.93	104.759566	5.78%	15.91%	4.16%	3.04%	2.11%
14-Dec-24	24,141,249.12	104.747448	5.85%	15.96%	4.19%	3.04%	2.11%
13-Dec-24	24,138,456.36	104.735331	5.94%	16.00%	4.21%	3.04%	2.11%
12-Dec-24	24,135,647.29	104.723142	6.03%	16.05%	4.24%	3.04%	2.11%
11-Dec-24	24,132,869.04	104.711087	6.13%	16.10%	4.27%	3.04%	2.11%
10-Dec-24	24,130,164.01	104.699351	6.24%	6.43%	-1.60%	3.05%	2.11%
9-Dec-24	24,127,126.06	104.686169	6.32%	6.46%	-1.58%	3.06%	2.12%
8-Dec-24	24,122,017.28	104.664002	6.30%	6.45%	-1.59%	3.05%	2.12%
7-Dec-24	24,118,854.15	104.650278	6.38%	6.48%	-1.57%	3.05%	2.12%
6-Dec-24	24,115,691.06	104.636553	6.45%	6.52%	-1.55%	3.05%	2.12%
5-Dec-24	24,112,534.37	104.622857	6.53%	6.56%	-1.53%	3.05%	2.12%
4-Dec-24	24,109,200.52	104.608391	6.63%	6.59%	-1.51%	3.05%	2.12%
3-Dec-24	24,105,961.21	104.594336	6.73%	6.62%	-1.49%	3.06%	2.12%
2-Dec-24	24,101,448.98	104.574758	6.77%	6.62%	-1.49%	3.06%	2.12%
1-Dec-24	24,096,896.85	104.555006	6.79%	6.66%	-1.47%	3.06%	2.12%
30-Nov-24	24,092,345.29	104.535257	6.82%	6.70%	-1.44%	3.06%	2.12%
29-Nov-24	24,088,836.27	104.520032	6.56%	6.73%	-1.43%	3.05%	2.12%
28-Nov-24	24,085,627.85	104.506111	6.49%	6.72%	-1.43%	3.06%	2.12%
27-Nov-24	24,082,201.13	104.491242	6.46%	6.71%	-1.44%	3.06%	2.12%
26-Nov-24	24,078,728.50	104.476175	6.49%	6.70%	-1.45%	3.07%	2.12%
25-Nov-24	24,074,139.54	104.456264	6.48%	6.70%	-1.45%	3.07%	2.12%
24-Nov-24	24,069,606.00	104.436593	6.47%	6.68%	-1.46%	3.06%	2.12%
23-Nov-24	24,065,537.97	104.418942	6.48%	6.70%	-1.45%	3.06%	2.12%
22-Nov-24	24,061,470.10	104.401292	6.50%	6.71%	-1.45%	3.06%	2.12%
21-Nov-24	24,057,406.49	104.383660	6.51%	6.71%	-1.45%	3.07%	2.12%
20-Nov-24	24,053,258.01	104.365660	6.51%	6.71%	-1.45%	3.07%	2.13%
19-Nov-24	24,049,070.01	104.347488	6.54%	6.71%	-1.45%	3.07%	2.13%
18-Nov-24	24,044,939.43	104.329566	6.55%	6.71%	-1.45%	3.07%	2.13%
17-Nov-24	24,040,860.50	104.311868	6.57%	6.71%	-1.45%	3.07%	2.13%
16-Nov-24	24,036,826.57	104.294365	6.58%	6.70%	-1.46%	3.07%	2.13%
15-Nov-24	24,032,762.22	104.276730	6.60%	6.70%	-1.46%	3.07%	2.13%
14-Nov-24	24,028,782.66	104.259463	6.62%	6.71%	-1.46%	3.07%	2.13%
13-Nov-24	24,024,338.60	104.240180	6.61%	6.70%	-1.46%	3.07%	2.13%
12-Nov-24	24,019,801.11	104.220492	6.59%	6.69%	-1.47%	3.07%	2.13%
11-Nov-24	24,015,109.63	104.200136	6.58%	6.67%	-1.48%	3.07%	2.13%
10-Nov-24	24,010,485.60	104.180073	6.57%	6.67%	-1.48%	3.08%	2.13%

1-Jan-25	24,787,456.03	107.551302	40.70%	33.51%	14.63%	2.98%	2.07%
31-Dec-24	24,782,622.37	107.530329	40.69%	33.53%	14.63%	2.77%	1.96%
30-Dec-24	24,803,255.16	107.619853	42.45%	34.15%	14.99%	6.19%	3.65%
9-Nov-24	24,005,884.80	104.160110	6.46%	6.67%	-1.48%	3.08%	2.13%
8-Nov-24	24,001,283.93	104.140147	6.45%	6.67%	-1.48%	3.08%	2.13%
7-Nov-24	23,996,653.27	104.120055	6.44%	6.55%	-1.56%	3.08%	2.13%
6-Nov-24	23,992,032.76	104.100007	6.44%	6.55%	-1.56%	3.08%	2.13%
5-Nov-24	23,987,421.03	104.079997	6.44%	6.67%	-1.49%	3.08%	2.14%
4-Nov-24	23,982,310.08	104.057821	6.40%	6.66%	-1.49%	3.08%	2.14%
3-Nov-24	23,977,217.53	104.035725	6.37%	6.69%	-1.48%	3.08%	2.14%
2-Nov-24	23,972,123.36	104.013622	6.33%	6.72%	-1.46%	3.08%	2.14%
1-Nov-24	23,967,064.69	103.991672	6.30%	6.68%	-1.49%	3.08%	2.14%
31-Oct-24	23,961,992.46	103.969664	6.36%	6.64%	-1.51%	3.03%	2.11%
30-Oct-24	23,963,312.76	103.975393	6.76%	6.74%	-1.45%	3.06%	2.12%
29-Oct-24	23,961,487.03	103.967471	6.90%	6.80%	-1.41%	3.07%	2.13%
28-Oct-24	23,958,703.22	103.955392	6.91%	6.81%	-1.41%	3.08%	2.13%
27-Oct-24	23,954,546.28	103.937356	6.84%	6.78%	-1.43%	3.08%	2.13%
26-Oct-24	23,950,242.38	103.918681	6.77%	6.74%	-1.45%	3.08%	2.14%
25-Oct-24	23,945,938.58	103.900007	6.78%	6.75%	-1.45%	3.08%	2.14%
24-Oct-24	23,941,594.48	103.881159	6.76%	6.75%	-1.45%	3.08%	2.14%
23-Oct-24	23,937,264.16	103.862370	6.77%	6.75%	-1.45%	3.08%	2.14%
22-Oct-24	23,932,954.02	103.843668	6.78%	6.75%	-1.45%	3.08%	2.14%
21-Oct-24	23,928,893.58	103.826050	6.78%	6.76%	-1.45%	3.09%	2.14%
20-Oct-24	23,924,143.86	103.805441	6.74%	6.75%	-1.45%	3.08%	2.14%
19-Oct-24	23,919,842.45	103.786778	6.75%	6.76%	-1.45%	3.08%	2.14%
18-Oct-24	23,915,528.48	103.768060	6.73%	6.76%	-1.45%	3.09%	2.14%
17-Oct-24	23,911,219.68	103.749364	6.71%	6.77%	-1.45%	3.09%	2.14%
16-Oct-24	23,906,895.89	103.730603	6.67%	6.77%	-1.45%	3.09%	2.14%
15-Oct-24	23,902,582.01	103.711886	6.67%	6.77%	-1.45%	3.09%	2.14%
14-Oct-24	23,898,246.47	103.693074	6.66%	6.77%	-1.45%	3.09%	2.14%
13-Oct-24	23,894,124.41	103.675189	6.66%	6.82%	-1.42%	3.09%	2.14%
12-Oct-24	23,889,689.13	103.655944	6.64%	6.82%	-1.42%	3.09%	2.14%
11-Oct-24	23,885,253.88	103.636700	6.63%	6.83%	4.50%	3.09%	0.69%
10-Oct-24	24,226,552.68	105.117575	6.63%	6.83%	4.50%	3.05%	2.11%
9-Oct-24	24,222,183.27	105.098617	6.64%	6.83%	4.50%	3.05%	2.11%
8-Oct-24	24,217,717.87	105.079242	6.65%	6.83%	4.50%	3.05%	2.11%
7-Oct-24	24,213,210.97	105.059686	6.41%	6.83%	4.50%	3.05%	2.11%
6-Oct-24	24,208,691.87	105.040078	6.41%	6.83%	4.50%	3.05%	2.11%
5-Oct-24	24,204,222.36	105.020685	6.67%	6.84%	4.51%	9.81%	2.11%
4-Oct-24	24,199,752.57	105.001291	6.68%	6.86%	4.52%	9.81%	2.11%
3-Oct-24	24,195,411.62	104.982456	6.77%	6.87%	4.53%	9.81%	2.11%
2-Oct-24	24,190,941.00	104.963058	6.86%	6.88%	10.98%	9.83%	2.12%
1-Oct-24	24,184,866.27	104.936700	6.73%	6.85%	10.96%	9.83%	2.12%
30-Sep-24	24,178,764.37	104.910225	6.60%	6.82%	10.94%	9.82%	2.12%
29-Sep-24	24,174,275.11	104.890746	6.49%	6.79%	10.92%	9.81%	2.11%
28-Sep-24	24,171,348.36	104.878047	6.54%	6.81%	10.93%	9.81%	2.11%
27-Sep-24	24,168,421.68	104.865348	6.55%	6.82%	10.95%	9.81%	2.11%
26-Sep-24	24,165,465.15	104.852520	6.55%	6.83%	10.95%	9.82%	2.12%
25-Sep-24	24,161,015.01	104.833211	6.48%	6.80%	10.94%	9.82%	2.12%
24-Sep-24	24,156,988.69	104.815741	6.50%	6.78%	10.92%	9.83%	2.12%
23-Sep-24	24,152,554.89	104.796503	6.49%	6.78%	10.93%	9.83%	2.12%
22-Sep-24	24,148,102.48	104.777184	6.49%	6.78%	10.93%	9.83%	2.12%
21-Sep-24	24,144,074.01	104.759705	6.51%	6.79%	10.93%	9.83%	2.12%
20-Sep-24	24,140,045.58	104.742226	6.52%	6.81%	10.95%	9.83%	2.12%
19-Sep-24	24,135,713.96	104.723431	6.52%	6.79%	10.94%	9.83%	2.12%
18-Sep-24	24,131,711.06	104.706063	6.56%	6.79%	10.94%	9.83%	2.12%
17-Sep-24	24,127,705.67	104.688684	6.58%	6.79%	10.93%	9.83%	2.12%
16-Sep-24	24,124,142.09	104.673222	6.63%	6.79%	10.94%	9.84%	2.12%
15-Sep-24	24,119,913.32	104.654873	6.63%	6.78%	10.93%	9.84%	2.12%
14-Sep-24	24,115,816.24	104.637096	6.65%	6.65%	10.84%	9.84%	2.12%
13-Sep-24	24,111,719.20	104.619320	6.66%	6.64%	10.84%	9.84%	2.12%
12-Sep-24	24,107,650.89	104.601667	6.77%	6.64%	10.84%	9.84%	2.12%
11-Sep-24	24,103,536.53	104.583815	6.79%	6.64%	10.84%	9.85%	2.12%
10-Sep-24	24,098,971.64	104.564009	6.78%	6.63%	10.83%	9.85%	2.12%
9-Sep-24	24,094,561.28	104.544872	6.78%	6.62%	10.83%	9.85%	2.12%
8-Sep-24	24,089,950.98	104.524869	6.78%	6.62%	10.83%	9.82%	2.10%
7-Sep-24	24,089,950.98	104.524869	7.02%	6.73%	10.91%	9.86%	2.12%
6-Sep-24	24,085,332.35	104.504829	7.01%	6.72%	10.90%	9.90%	2.14%
5-Sep-24	24,076,095.38	104.464750	6.75%	6.59%	10.81%	9.86%	2.13%
4-Sep-24	24,071,441.58	104.444557	6.76%	6.58%	10.81%	9.87%	2.13%
3-Sep-24	24,065,401.59	104.418350	6.70%	-2.72%	4.26%	9.88%	2.13%
2-Sep-24	24,059,321.93	104.391971	6.64%	6.44%	4.25%	9.86%	2.12%

1-Jan-25	24,787,456.03	107.551302	40.70%	33.51%	14.63%	2.98%	2.07%
31-Dec-24	24,782,622.37	107.530329	40.69%	33.53%	14.63%	2.77%	1.96%
30-Dec-24	24,803,255.16	107.619853	42.45%	34.15%	14.99%	6.19%	3.65%
1-Sep-24	24,055,734.74	104.376406	6.71%	6.49%	4.28%	9.86%	2.12%
31-Aug-24	24,052,120.51	104.360724	6.78%	6.57%	4.34%	9.85%	2.12%
30-Aug-24	24,049,702.55	104.350233	6.92%	6.68%	4.41%	9.87%	2.12%
29-Aug-24	24,045,789.24	104.333253	6.89%	6.61%	4.36%	9.86%	2.12%
28-Aug-24	24,042,762.42	104.320120	6.91%	6.56%	4.33%	9.86%	2.12%
27-Aug-24	24,039,733.95	104.306980	6.93%	6.55%	4.32%	9.86%	2.12%
26-Aug-24	24,036,676.88	104.293715	6.94%	6.53%	4.31%	9.87%	2.13%
25-Aug-24	24,032,355.03	104.274963	6.89%	6.53%	4.31%	9.88%	2.13%
24-Aug-24	24,028,020.25	104.256155	6.83%	6.53%	4.31%	9.88%	2.13%
23-Aug-24	24,023,685.35	104.237346	6.84%	6.53%	4.31%	9.88%	2.13%
22-Aug-24	24,019,298.22	104.218310	6.84%	6.53%	4.31%	9.88%	2.13%
21-Aug-24	24,015,021.86	104.199756	6.85%	6.53%	4.31%	9.88%	2.13%
20-Aug-24	24,010,705.45	104.181027	6.86%	6.53%	4.31%	9.89%	2.13%
19-Aug-24	24,005,978.78	104.160518	6.81%	6.53%	4.31%	9.89%	2.13%
18-Aug-24	24,001,616.33	104.141590	6.78%	6.53%	4.31%	9.89%	2.13%
17-Aug-24	23,997,283.80	104.122791	6.76%	6.53%	4.31%	9.89%	2.13%
16-Aug-24	23,992,951.30	104.103993	6.73%	6.53%	4.31%	9.89%	2.13%
15-Aug-24	23,988,618.86	104.085194	6.69%	6.53%	4.31%	9.89%	2.13%
14-Aug-24	23,984,260.14	104.066282	6.42%	6.55%	4.32%	9.91%	2.14%
13-Aug-24	23,978,254.80	104.040225	6.30%	6.48%	4.27%	9.90%	2.13%
12-Aug-24	23,973,803.80	104.020913	6.28%	6.48%	4.28%	9.90%	2.13%
11-Aug-24	23,969,351.46	104.001594	6.26%	6.63%	4.37%	9.90%	2.13%
10-Aug-24	23,964,926.28	103.982394	6.24%	6.63%	4.37%	9.91%	2.13%
9-Aug-24	23,960,501.11	103.963193	6.22%	6.64%	4.38%	9.91%	2.13%
8-Aug-24	23,956,057.57	103.943913	6.23%	6.64%	4.38%	9.91%	2.13%
7-Aug-24	23,951,637.01	103.924732	6.22%	6.65%	4.39%	9.91%	2.14%
6-Aug-24	23,947,161.65	103.905314	6.20%	6.65%	4.38%	9.92%	2.14%
5-Aug-24	23,942,284.61	103.884153	6.17%	6.64%	4.38%	9.92%	2.14%
4-Aug-24	23,937,399.94	103.862959	6.13%	6.65%	4.39%	9.92%	2.14%
3-Aug-24	23,932,530.78	103.841832	6.06%	6.67%	4.40%	9.92%	2.14%
2-Aug-24	23,927,661.62	103.820705	6.08%	6.68%	4.41%	9.92%	2.14%
1-Aug-24	23,922,751.88	103.799402	6.11%	6.69%	4.41%	9.93%	2.14%
31-Jul-24	23,917,855.15	103.778155	6.21%	6.70%	4.42%	9.92%	2.13%
30-Jul-24	23,914,535.99	103.763753	6.38%	7.06%	4.65%	9.92%	2.13%
29-Jul-24	23,911,147.02	103.749049	6.25%	7.09%	4.67%	9.92%	2.13%
28-Jul-24	23,907,760.34	103.734354	6.15%	7.12%	4.69%	9.92%	2.13%
27-Jul-24	23,904,393.11	103.719744	6.09%	7.16%	4.72%	9.92%	2.14%
26-Jul-24	23,901,025.93	103.705134	6.05%	7.19%	4.74%	9.92%	2.13%
25-Jul-24	23,897,882.45	103.691495	6.11%	7.23%	4.76%	9.93%	2.14%
24-Jul-24	23,893,320.64	103.671701	6.10%	7.23%	4.76%	9.93%	2.14%
23-Jul-24	23,889,013.66	103.653013	6.10%	7.24%	4.77%	9.94%	2.14%
22-Jul-24	23,884,687.89	103.634244	6.09%	7.25%	4.77%	9.94%	2.14%
21-Jul-24	23,880,091.36	103.614300	6.07%	7.25%	4.77%	9.93%	2.14%
20-Jul-24	23,876,295.41	103.597830	6.10%	7.27%	4.79%	9.94%	2.14%
19-Jul-24	23,872,481.56	103.581282	6.16%	7.27%	4.79%	9.94%	2.14%
18-Jul-24	23,868,667.90	103.564734	6.18%	7.28%	4.80%	9.94%	2.14%
17-Jul-24	23,864,894.96	103.548364	6.21%	7.29%	4.80%	9.94%	2.14%
16-Jul-24	23,861,202.28	103.532342	6.24%	7.31%	4.82%	9.90%	2.12%
15-Jul-24	23,861,889.70	103.535324	6.51%	7.45%	4.90%	9.94%	2.14%
14-Jul-24	23,858,097.86	103.518872	6.57%	7.46%	4.91%	9.95%	2.14%
13-Jul-24	23,854,057.94	103.501343	6.54%	7.47%	4.92%	9.95%	2.14%
12-Jul-24	23,850,028.95	103.483861	6.57%	7.49%	4.93%	9.95%	2.14%
11-Jul-24	23,845,949.65	103.466161	6.87%	7.50%	4.94%	9.95%	2.14%
10-Jul-24	23,841,903.16	103.448604	6.90%	7.51%	4.95%	9.96%	2.15%
9-Jul-24	23,837,306.14	103.428658	6.90%	7.51%	4.94%	9.96%	2.14%
8-Jul-24	23,833,222.31	103.410938	6.93%	7.52%	4.95%	9.96%	2.14%
7-Jul-24	23,829,131.64	103.393189	6.96%	7.53%	4.96%	9.96%	2.15%
6-Jul-24	23,824,838.85	103.374563	6.96%	7.54%	4.97%	9.96%	2.15%
5-Jul-24	23,820,546.24	103.355937	6.98%	7.55%	4.97%	6.91%	0.64%
4-Jul-24	24,174,883.70	104.893387	6.99%	7.53%	12.25%	6.81%	2.12%
3-Jul-24	24,169,655.55	104.870702	6.78%	7.17%	12.23%	6.81%	2.12%
2-Jul-24	24,164,191.91	104.846996	6.78%	7.15%	12.22%	6.82%	2.13%
1-Jul-24	24,157,533.57	104.818105	6.92%	7.43%	12.18%	6.83%	2.13%
30-Jun-24	24,150,974.61	104.789646	6.65%	7.04%	12.15%	6.78%	2.10%
29-Jun-24	24,150,007.26	104.785449	7.43%	7.14%	12.20%	6.79%	2.11%
28-Jun-24	24,148,574.92	104.779234	7.86%	7.49%	12.23%	6.79%	2.11%
27-Jun-24	24,146,229.39	104.769057	7.70%	7.21%	12.24%	6.79%	2.11%
26-Jun-24	24,143,771.34	104.758392	7.81%	7.23%	12.25%	6.81%	2.12%
25-Jun-24	24,139,537.10	104.740020	8.12%	7.50%	12.23%	6.81%	2.12%

1-Jan-25	24,787,456.03	107.551302	40.70%	33.51%	14.63%	2.98%	2.07%
31-Dec-24	24,782,622.37	107.530329	40.69%	33.53%	14.63%	2.77%	1.96%
30-Dec-24	24,803,255.16	107.619853	42.45%	34.15%	14.99%	6.19%	3.65%
24-Jun-24	24,135,178.46	104.721108	7.84%	7.16%	12.23%	6.81%	2.12%
23-Jun-24	24,130,881.17	104.702462	7.85%	7.16%	12.23%	6.81%	2.12%
22-Jun-24	24,126,649.13	104.684100	8.16%	7.48%	12.22%	6.82%	2.12%
21-Jun-24	24,122,417.12	104.665737	7.89%	7.47%	12.22%	6.82%	2.12%
20-Jun-24	24,118,196.33	104.647423	7.91%	7.46%	12.22%	6.82%	2.12%
19-Jun-24	24,113,305.79	104.626204	8.18%	7.44%	12.20%	6.82%	2.12%
18-Jun-24	24,109,088.98	104.607907	7.87%	7.43%	12.19%	6.82%	2.12%
17-Jun-24	24,104,810.06	104.589341	7.86%	7.42%	12.19%	6.82%	2.12%
16-Jun-24	24,100,514.86	104.570705	8.15%	7.42%	12.19%	6.82%	2.12%
15-Jun-24	24,096,236.61	104.552142	7.87%	7.41%	12.18%	6.83%	2.12%
14-Jun-24	24,091,388.38	104.531105	7.84%	7.39%	12.17%	6.82%	2.12%
13-Jun-24	24,087,889.38	104.515923	8.16%	7.43%	12.20%	6.83%	2.12%
12-Jun-24	24,083,326.50	104.496125	7.87%	7.43%	12.20%	6.87%	2.15%
11-Jun-24	24,073,671.79	104.454234	7.61%	7.30%	12.11%	6.83%	2.13%
10-Jun-24	24,069,047.78	104.434171	7.88%	7.30%	12.12%	6.83%	2.13%
9-Jun-24	24,064,428.10	104.414126	7.60%	7.31%	12.12%	6.84%	2.13%
8-Jun-24	24,059,846.18	104.394246	7.59%	-3.13%	4.73%	6.84%	2.13%
7-Jun-24	24,055,246.48	104.374288	7.86%	7.18%	4.73%	6.84%	2.13%
6-Jun-24	24,050,924.06	104.355533	7.60%	7.19%	4.74%	6.84%	2.13%
5-Jun-24	24,046,290.68	104.335429	7.60%	7.19%	4.74%	6.85%	2.13%
4-Jun-24	24,040,985.11	104.312409	7.84%	7.18%	4.73%	6.85%	2.13%
3-Jun-24	24,035,740.99	104.289655	7.53%	7.16%	4.72%	6.85%	2.13%
2-Jun-24	24,030,347.02	104.266251	7.48%	7.14%	4.71%	6.85%	2.13%
1-Jun-24	24,025,065.87	104.243336	7.70%	7.13%	4.70%	6.85%	2.13%
31-May-24	24,019,774.06	104.220375	7.42%	7.01%	4.62%	6.95%	2.18%
30-May-24	24,003,362.38	104.149166	6.82%	6.55%	4.32%	6.85%	2.13%
29-May-24	23,998,841.78	104.129551	6.77%	6.54%	4.32%	6.85%	2.13%
28-May-24	23,994,344.87	104.110039	6.69%	6.55%	4.32%	6.86%	2.13%
27-May-24	23,989,756.49	104.090131	6.62%	6.54%	4.31%	6.86%	2.13%
26-May-24	23,985,204.84	104.070381	6.54%	6.62%	4.37%	6.86%	2.13%
25-May-24	23,980,668.58	104.050699	6.46%	6.63%	4.37%	6.86%	2.13%
24-May-24	23,976,132.34	104.031016	6.44%	6.64%	4.38%	6.86%	2.13%
23-May-24	23,971,587.52	104.011297	6.41%	6.65%	4.39%	6.86%	2.13%
22-May-24	23,967,037.46	103.991554	6.39%	6.65%	4.39%	6.86%	2.13%
21-May-24	23,962,483.49	103.971795	6.35%	6.66%	4.39%	6.86%	2.13%
20-May-24	23,957,927.17	103.952025	6.32%	6.68%	4.40%	6.86%	2.13%
19-May-24	23,954,137.13	103.935580	6.32%	6.70%	4.42%	6.86%	2.13%
18-May-24	23,949,989.50	103.917584	6.31%	6.60%	4.35%	6.86%	2.13%
17-May-24	23,945,841.89	103.899588	6.31%	6.62%	4.36%	6.87%	2.14%
16-May-24	23,941,324.69	103.879988	6.28%	6.63%	4.37%	6.87%	2.14%
15-May-24	23,937,170.86	103.861965	6.27%	6.65%	4.38%	6.87%	2.14%
14-May-24	23,933,022.73	103.843966	6.28%	6.67%	4.40%	6.87%	2.14%
13-May-24	23,928,624.26	103.824881	6.29%	6.68%	4.41%	6.88%	2.14%
12-May-24	23,923,983.90	103.804747	6.29%	6.69%	4.41%	6.87%	2.14%
11-May-24	23,919,527.56	103.785411	6.31%	6.71%	4.42%	6.88%	2.14%
10-May-24	23,915,071.23	103.766076	6.32%	6.72%	4.43%	6.88%	2.14%
9-May-24	23,910,605.05	103.746697	6.33%	6.73%	4.44%	6.88%	2.14%
8-May-24	23,906,120.30	103.727238	26.79%	6.75%	4.45%	6.88%	2.14%
7-May-24	23,901,661.63	103.707892	6.00%	6.76%	4.46%	6.88%	2.14%
6-May-24	23,896,960.85	103.687496	5.99%	6.77%	4.46%	6.88%	2.14%
5-May-24	23,892,393.42	103.667678	6.00%	6.78%	4.47%	6.88%	2.14%
4-May-24	23,887,937.22	103.648343	6.02%	6.79%	4.48%	6.89%	2.14%
3-May-24	23,883,481.04	103.629008	6.04%	6.81%	4.49%	6.89%	2.14%
2-May-24	23,879,016.80	103.609638	6.03%	6.83%	4.50%	6.89%	2.14%
1-May-24	23,874,598.71	103.590468	6.05%	6.84%	4.51%	6.89%	2.14%
30-Apr-24	23,870,000.17	103.570515	6.09%	6.86%	4.52%	6.88%	2.14%
29-Apr-24	23,866,443.07	103.555081	5.87%	6.57%	4.33%	6.88%	2.14%
28-Apr-24	23,863,398.29	103.541870	5.94%	6.58%	4.34%	6.88%	2.14%
27-Apr-24	23,860,353.58	103.528659	6.01%	6.63%	4.37%	6.88%	2.14%
26-Apr-24	23,857,308.93	103.515448	6.08%	6.68%	4.41%	6.88%	2.14%
25-Apr-24	23,854,261.25	103.502225	6.31%	6.74%	4.44%	6.89%	2.14%
24-Apr-24	23,850,241.99	103.484785	6.35%	6.77%	4.46%	6.89%	2.14%
23-Apr-24	23,846,217.02	103.467321	6.40%	6.80%	4.48%	6.89%	2.14%
22-Apr-24	23,842,197.90	103.449883	6.44%	6.82%	4.50%	6.89%	2.14%
21-Apr-24	23,838,316.92	103.433043	6.47%	6.86%	4.52%	6.89%	2.14%
20-Apr-24	23,834,480.44	103.416397	6.51%	6.90%	4.55%	6.90%	2.14%
19-Apr-24	23,830,644.00	103.399751	6.59%	6.94%	4.57%	6.90%	2.14%
18-Apr-24	23,826,728.23	103.382761	6.62%	6.97%	4.59%	6.90%	2.14%
17-Apr-24	23,822,703.67	103.365298	6.44%	7.00%	4.61%	6.90%	2.14%

1-Jan-25	24,787,456.03	107.551302	40.70%	33.51%	14.63%	2.98%	2.07%
31-Dec-24	24,782,622.37	107.530329	40.69%	33.53%	14.63%	2.77%	1.96%
30-Dec-24	24,803,255.16	107.619853	42.45%	34.15%	14.99%	6.19%	3.65%
16-Apr-24	23,818,781.13	103.348279	6.49%	7.05%	4.65%	6.90%	2.15%
15-Apr-24	23,814,844.45	103.331198	6.53%	7.09%	4.67%	6.91%	2.15%
14-Apr-24	23,810,547.20	103.312552	6.56%	7.12%	4.69%	6.91%	2.15%
13-Apr-24	23,805,886.31	103.292329	6.58%	7.14%	4.71%	6.91%	2.15%
12-Apr-24	23,801,225.44	103.272106	6.59%	7.17%	4.72%	6.91%	2.15%
11-Apr-24	23,796,496.64	103.251588	6.60%	7.19%	4.74%	6.91%	2.15%
10-Apr-24	23,791,812.93	103.231265	6.61%	7.22%	4.75%	6.91%	2.15%
9-Apr-24	23,787,129.76	103.210945	6.63%	7.24%	4.77%	3.48%	0.45%
8-Apr-24	24,186,018.37	104.941699	6.65%	7.27%	12.06%	3.42%	2.12%
7-Apr-24	24,181,503.46	104.922109	6.68%	7.30%	12.08%	3.42%	2.12%
6-Apr-24	24,176,784.32	104.901633	6.68%	7.32%	12.10%	3.42%	2.12%
5-Apr-24	24,172,065.25	104.881158	6.70%	7.35%	12.12%	3.42%	2.12%
4-Apr-24	24,167,228.29	104.860170	6.71%	7.38%	12.14%	3.42%	2.12%
3-Apr-24	24,162,967.15	104.841681	6.74%	7.42%	12.17%	3.42%	2.12%
2-Apr-24	24,158,194.94	104.820975	6.76%	7.44%	12.19%	6.81%	2.12%
1-Apr-24	24,153,472.81	104.800486	6.77%	7.47%	12.21%	6.78%	2.10%
31-Mar-24	24,152,722.81	104.797232	6.99%	7.22%	12.04%	6.76%	2.10%
30-Mar-24	24,153,643.46	104.801226	7.29%	7.33%	12.11%	6.81%	2.12%
29-Mar-24	24,149,189.12	104.781899	6.70%	7.33%	12.12%	6.81%	2.12%
28-Mar-24	24,144,710.79	104.762468	6.64%	7.34%	12.12%	6.81%	2.12%
27-Mar-24	24,140,378.26	104.743670	6.68%	7.35%	12.13%	6.84%	2.13%
26-Mar-24	24,132,799.83	104.710787	6.55%	7.27%	12.08%	6.82%	2.12%
25-Mar-24	24,127,924.94	104.689635	6.56%	7.27%	12.08%	6.82%	2.12%
24-Mar-24	24,123,051.82	104.668491	6.57%	7.26%	12.07%	6.82%	2.12%
23-Mar-24	24,118,178.75	104.647347	6.58%	7.26%	12.07%	6.82%	2.12%
22-Mar-24	24,113,748.49	104.628125	6.61%	7.29%	12.09%	6.82%	2.12%
21-Mar-24	24,109,103.29	104.607969	6.63%	7.29%	12.10%	6.83%	2.13%
20-Mar-24	24,103,731.47	104.584661	6.63%	7.27%	12.09%	6.82%	2.12%
19-Mar-24	24,099,234.66	104.565150	6.66%	7.28%	12.09%	6.79%	2.11%
18-Mar-24	24,098,878.04	104.563602	6.91%	7.40%	12.18%	6.83%	2.12%
17-Mar-24	24,094,027.98	104.542558	6.93%	7.39%	12.17%	6.83%	2.12%
16-Mar-24	24,089,177.92	104.521514	6.96%	7.37%	12.16%	6.83%	2.12%
15-Mar-24	24,084,327.88	104.500470	7.00%	7.37%	12.16%	6.83%	2.13%
14-Mar-24	24,079,408.01	104.479123	7.02%	7.37%	12.16%	6.83%	2.13%
13-Mar-24	24,074,512.91	104.457884	7.05%	7.38%	12.17%	6.84%	2.13%
12-Mar-24	24,069,613.21	104.436624	7.09%	7.38%	12.17%	6.84%	2.13%
11-Mar-24	24,064,692.02	104.415271	7.12%	7.38%	12.18%	6.84%	2.13%
10-Mar-24	24,059,782.45	104.393969	7.15%	-3.06%	4.78%	6.84%	2.13%
9-Mar-24	24,054,850.60	104.372570	7.18%	7.26%	4.78%	6.84%	2.13%
8-Mar-24	24,049,918.76	104.351171	7.22%	7.27%	4.79%	6.84%	2.13%
7-Mar-24	24,045,015.16	104.329895	7.24%	7.27%	4.79%	6.84%	2.13%
6-Mar-24	24,040,043.60	104.308323	7.28%	7.27%	4.79%	6.85%	2.13%
5-Mar-24	24,035,107.18	104.286905	7.32%	7.28%	4.79%	6.85%	2.13%
4-Mar-24	24,030,168.56	104.265476	7.36%	7.28%	4.80%	6.85%	2.13%
3-Mar-24	24,025,162.48	104.243755	7.39%	7.29%	4.80%	6.85%	2.13%
2-Mar-24	24,020,165.35	104.222073	7.42%	7.30%	4.81%	6.85%	2.13%
1-Mar-24	24,015,168.24	104.200391	7.46%	7.30%	4.81%	6.85%	2.13%
29-Feb-24	24,010,150.17	104.178618	6.98%	7.25%	4.78%	6.75%	2.08%
28-Feb-24	24,017,374.92	104.209965	7.28%	7.53%	4.96%	6.84%	2.13%
27-Feb-24	24,013,969.00	104.195187	7.35%	9.05%	5.95%	6.85%	2.13%
26-Feb-24	24,008,954.67	104.173430	7.58%	10.99%	7.20%	6.86%	2.13%
25-Feb-24	24,003,937.44	104.151661	7.31%	10.94%	7.16%	6.86%	2.13%
24-Feb-24	23,998,924.39	104.129910	7.30%	10.86%	7.12%	6.86%	2.13%
23-Feb-24	23,993,911.36	104.108158	7.53%	10.80%	7.08%	6.86%	2.13%
22-Feb-24	23,988,892.73	104.086383	7.25%	10.74%	7.04%	6.86%	2.13%
21-Feb-24	23,983,872.49	104.064600	7.24%	10.68%	7.00%	6.86%	2.14%
20-Feb-24	23,978,750.34	104.042376	7.51%	10.62%	6.96%	6.87%	2.14%
19-Feb-24	23,973,466.61	104.019450	7.23%	10.56%	6.92%	6.87%	2.14%
18-Feb-24	23,968,307.60	103.997065	7.21%	10.55%	6.91%	6.87%	2.14%
17-Feb-24	23,963,167.94	103.974764	7.43%	10.51%	6.89%	6.87%	2.14%
16-Feb-24	23,958,028.30	103.952464	7.16%	10.48%	6.87%	6.87%	2.14%
15-Feb-24	23,952,433.57	103.928189	7.10%	10.45%	6.85%	6.88%	2.14%
14-Feb-24	23,946,962.80	103.904451	7.26%	10.42%	6.83%	6.88%	2.14%
13-Feb-24	23,941,650.50	103.881402	7.02%	10.39%	6.81%	6.88%	2.14%
12-Feb-24	23,936,172.73	103.857634	6.99%	10.36%	6.79%	6.88%	2.14%
11-Feb-24	23,930,600.83	103.833458	7.19%	10.33%	6.77%	6.88%	2.14%
10-Feb-24	23,925,103.15	103.809604	7.16%	10.30%	6.75%	6.88%	2.14%
9-Feb-24	23,919,605.48	103.785750	7.13%	10.39%	6.81%	6.89%	2.14%
8-Feb-24	23,914,093.99	103.761836	6.98%	10.24%	6.72%	6.89%	2.14%

1-Jan-25	24,787,456.03	107.551302	40.70%	33.51%	14.63%	2.98%	2.07%
31-Dec-24	24,782,622.37	107.530329	40.69%	33.53%	14.63%	2.77%	1.96%
30-Dec-24	24,803,255.16	107.619853	42.45%	34.15%	14.99%	6.19%	3.65%
7-Feb-24	23,908,440.13	103.737304	6.95%	10.21%	6.69%	6.89%	2.14%
6-Feb-24	23,903,185.34	103.714504	6.94%	10.19%	6.68%	6.89%	2.15%
5-Feb-24	23,897,468.02	103.689696	6.90%	10.15%	6.66%	6.89%	2.15%
4-Feb-24	23,891,787.72	103.665050	6.86%	10.12%	6.64%	6.89%	2.15%
3-Feb-24	23,886,146.75	103.640574	6.83%	10.09%	6.62%	6.90%	2.15%
2-Feb-24	23,880,505.78	103.616098	6.80%	10.06%	6.60%	6.90%	2.15%
1-Feb-24	23,874,879.57	103.591686	6.78%	10.04%	6.58%	6.90%	2.15%
31-Jan-24	23,869,233.95	103.567190	6.76%	10.01%	6.56%	6.78%	2.09%
30-Jan-24	23,877,387.80	103.602570	7.47%	10.35%	6.79%	6.88%	2.14%
29-Jan-24	23,874,452.22	103.589832	7.49%	10.09%	6.62%	6.89%	2.14%
28-Jan-24	23,869,824.01	103.569751	7.40%	10.06%	6.60%	6.89%	2.14%
27-Jan-24	23,865,172.39	103.549568	10.40%	10.02%	6.58%	6.89%	2.14%
26-Jan-24	23,860,520.89	103.529385	14.39%	9.99%	6.55%	6.89%	2.14%
25-Jan-24	23,855,863.74	103.509178	14.29%	9.96%	6.53%	6.90%	2.14%
24-Jan-24	23,851,219.15	103.489025	14.16%	9.93%	6.51%	6.90%	2.14%
23-Jan-24	23,846,742.83	103.469603	14.06%	9.90%	6.49%	6.90%	2.15%
22-Jan-24	23,841,924.43	103.448696	13.95%	9.87%	6.48%	6.91%	2.15%
21-Jan-24	23,836,483.59	103.425089	13.79%	9.83%	6.45%	6.90%	2.15%
20-Jan-24	23,831,833.59	103.404913	13.69%	9.81%	6.43%	6.90%	2.15%
19-Jan-24	23,827,183.61	103.384737	13.60%	9.78%	6.42%	6.90%	2.15%
18-Jan-24	23,822,472.37	103.364295	13.60%	9.75%	6.40%	6.91%	2.15%
17-Jan-24	23,817,809.65	103.344063	13.56%	9.73%	6.39%	6.91%	2.15%
16-Jan-24	23,813,398.08	103.324922	13.53%	9.73%	6.39%	6.90%	2.15%
15-Jan-24	23,809,381.22	103.307493	13.55%	9.75%	6.40%	6.91%	2.15%
14-Jan-24	23,804,390.30	103.285838	13.51%	9.73%	6.39%	6.91%	2.15%
13-Jan-24	23,799,447.43	103.264391	13.48%	9.73%	6.38%	6.91%	2.15%
12-Jan-24	23,794,504.57	103.242944	13.45%	9.72%	6.38%	6.92%	2.15%
11-Jan-24	23,789,545.56	103.221427	13.42%	9.71%	6.37%	6.92%	2.15%
10-Jan-24	23,784,578.09	103.199874	13.38%	9.71%	6.37%	3.48%	2.15%
9-Jan-24	24,182,956.29	104.928413	13.61%	9.70%	6.37%	3.42%	2.12%
8-Jan-24	24,177,939.57	104.906646	13.32%	9.69%	6.36%	3.43%	2.12%
7-Jan-24	24,172,887.72	104.884726	13.28%	9.68%	6.36%	3.42%	2.12%
6-Jan-24	24,167,929.63	104.863213	13.25%	9.68%	6.35%	3.43%	2.12%
5-Jan-24	24,162,971.55	104.841700	13.22%	9.67%	6.35%	3.43%	2.12%
4-Jan-24	24,157,927.46	104.819814	13.19%	9.66%	6.34%	3.43%	2.12%
3-Jan-24	24,152,827.84	104.797688	13.16%	9.65%	13.72%	3.43%	2.12%
2-Jan-24	24,147,654.62	104.775241	13.13%	9.64%	13.71%	6.82%	2.12%
1-Jan-24	24,142,426.91	104.752559	13.09%	9.62%	13.70%	6.82%	2.12%
31-Dec-23	24,137,346.56	104.730515	13.06%	9.60%	13.69%	6.80%	2.11%
30-Dec-23	24,134,143.74	104.716618	13.12%	9.43%	13.58%	6.80%	2.11%
29-Dec-23	24,131,092.14	104.703378	12.59%	9.41%	13.56%	7.28%	2.35%
28-Dec-23	24,071,965.10	104.446829	9.47%	7.85%	12.50%	7.42%	2.42%
27-Dec-23	23,997,271.63	104.122738	5.58%	5.89%	11.15%	6.84%	2.12%
26-Dec-23	23,994,374.84	104.110169	5.61%	5.87%	11.14%	6.84%	2.12%
25-Dec-23	23,992,009.58	104.099907	5.67%	5.84%	11.12%	6.84%	2.12%
24-Dec-23	23,989,250.56	104.087935	5.71%	5.84%	11.12%	6.84%	2.13%
23-Dec-23	23,986,491.58	104.075964	5.74%	5.84%	11.13%	6.84%	2.13%
22-Dec-23	23,983,732.66	104.063994	5.79%	5.84%	11.13%	6.84%	2.13%
21-Dec-23	23,980,948.75	104.051914	5.85%	5.85%	11.13%	6.85%	2.13%
20-Dec-23	23,977,834.80	104.038403	5.89%	5.84%	11.12%	6.86%	2.13%
19-Dec-23	23,973,191.66	104.018257	5.83%	5.80%	11.10%	6.86%	2.13%
18-Dec-23	23,969,349.46	104.001586	5.83%	5.77%	11.08%	6.86%	2.13%
17-Dec-23	23,965,510.02	103.984927	5.83%	5.74%	11.06%	6.86%	2.13%
16-Dec-23	23,961,177.98	103.966130	5.83%	5.79%	11.09%	6.86%	2.13%
15-Dec-23	23,956,845.97	103.947334	5.84%	5.84%	11.13%	6.86%	2.13%
14-Dec-23	23,952,516.10	103.928547	5.85%	5.85%	11.14%	6.87%	2.14%
13-Dec-23	23,948,160.91	103.909650	5.86%	5.86%	11.15%	6.87%	2.14%
12-Dec-23	23,943,830.97	103.890862	5.88%	5.87%	11.16%	6.87%	2.14%
11-Dec-23	23,939,503.31	103.872085	5.90%	5.89%	11.17%	6.91%	2.15%
10-Dec-23	23,930,741.77	103.834069	5.68%	5.78%	11.10%	6.84%	2.12%
9-Dec-23	23,930,741.77	103.834069	5.93%	5.91%	11.19%	6.87%	2.14%
8-Dec-23	23,926,372.97	103.815113	5.94%	5.92%	11.20%	6.87%	2.14%
7-Dec-23	23,921,964.69	103.795986	5.96%	5.93%	11.21%	6.87%	2.14%
6-Dec-23	23,917,584.33	103.776980	5.98%	5.94%	11.21%	6.88%	2.14%
5-Dec-23	23,913,197.62	103.757946	5.99%	-4.41%	3.85%	6.88%	2.14%
4-Dec-23	23,234,262.48	103.737816	5.99%	-4.36%	3.89%	6.88%	2.14%
3-Dec-23	23,229,840.99	103.718075	6.00%	-4.37%	3.88%	6.88%	2.14%
2-Dec-23	23,225,476.61	103.698589	6.00%	-4.38%	3.87%	6.88%	2.14%
1-Dec-23	23,221,112.24	103.679102	6.00%	-4.40%	3.86%	6.88%	2.14%

1-Jan-25	24,787,456.03	107.551302	40.70%	33.51%	14.63%	2.98%	2.07%
31-Dec-24	24,782,622.37	107.530329	40.69%	33.53%	14.63%	2.77%	1.96%
30-Dec-24	24,803,255.16	107.619853	42.45%	34.15%	14.99%	6.19%	3.65%
30-Nov-23	23,217,033.95	103.660893	6.02%	-4.36%	3.89%	6.79%	2.10%
29-Nov-23	23,223,038.96	103.687705	6.20%	-4.19%	4.01%	6.87%	2.14%
28-Nov-23	23,219,767.93	103.673100	6.13%	-3.90%	4.23%	6.87%	2.14%
27-Nov-23	23,216,598.70	103.658950	6.08%	-3.90%	4.23%	6.88%	2.14%
26-Nov-23	23,213,326.05	103.644338	6.01%	-3.88%	4.24%	6.88%	2.14%
25-Nov-23	23,209,921.01	103.629135	5.94%	-3.86%	4.26%	6.88%	2.14%
24-Nov-23	23,206,516.01	103.613932	5.82%	-3.84%	4.27%	6.88%	2.14%
23-Nov-23	23,203,343.21	103.599766	5.79%	-3.82%	4.29%	6.88%	2.14%
22-Nov-23	23,199,700.51	103.583502	5.75%	-3.80%	4.30%	6.88%	2.14%
21-Nov-23	23,196,026.44	103.567098	5.69%	-3.80%	4.30%	6.89%	2.14%
20-Nov-23	23,192,278.62	103.550364	5.64%	-3.79%	4.31%	6.88%	2.14%
19-Nov-23	23,188,854.75	103.535077	5.60%	-3.77%	4.33%	6.89%	2.14%
18-Nov-23	23,185,130.56	103.518449	5.56%	-3.75%	4.34%	6.89%	2.14%
17-Nov-23	23,181,406.41	103.501821	5.50%	-3.74%	4.35%	6.89%	2.14%
16-Nov-23	23,177,287.37	103.483430	5.43%	-3.73%	4.36%	6.90%	2.14%
15-Nov-23	23,172,871.81	103.463715	5.51%	-3.72%	4.37%	6.90%	2.15%
14-Nov-23	23,168,477.73	103.444096	5.59%	-3.71%	4.37%	6.90%	2.15%
13-Nov-23	22,785,407.34	103.424299	5.60%	-3.70%	4.38%	6.90%	2.15%
12-Nov-23	22,780,963.16	103.404127	5.61%	-3.70%	4.39%	6.90%	2.15%
11-Nov-23	22,776,529.22	103.384001	5.62%	-3.69%	4.39%	6.90%	2.15%
10-Nov-23	22,772,095.29	103.363875	5.62%	-3.69%	4.40%	6.91%	2.15%
9-Nov-23	22,767,655.24	103.343721	5.63%	-3.68%	4.40%	6.91%	2.15%
8-Nov-23	22,763,217.65	103.323579	5.64%	-3.68%	4.41%	6.91%	2.15%
7-Nov-23	22,758,739.47	103.303252	5.64%	-3.67%	4.41%	6.91%	2.15%
6-Nov-23	22,754,285.60	103.283036	5.65%	-3.67%	4.42%	6.91%	2.15%
5-Nov-23	22,749,871.86	103.263002	5.65%	-3.66%	4.43%	6.91%	2.15%
4-Nov-23	22,745,458.13	103.242967	5.52%	-3.65%	4.43%	6.91%	2.15%
3-Nov-23	22,741,044.41	103.222933	5.64%	-3.64%	4.44%	6.92%	2.15%
2-Nov-23	22,736,617.47	103.202839	5.61%	-3.61%	4.47%	6.92%	2.15%
1-Nov-23	22,732,337.26	103.183411	5.59%	-3.57%	4.50%	6.92%	2.15%
31-Oct-23	22,728,029.14	103.163856	5.56%	-3.53%	4.53%	6.86%	2.12%
30-Oct-23	22,730,779.82	103.176342	6.02%	-3.45%	4.58%	6.90%	2.14%
29-Oct-23	22,728,740.30	103.167084	5.95%	-3.43%	4.60%	6.90%	2.14%
28-Oct-23	22,726,653.74	103.157613	6.66%	-3.41%	4.61%	6.90%	2.14%
27-Oct-23	22,724,567.18	103.148142	6.73%	-3.39%	4.62%	6.90%	2.14%
26-Oct-23	22,722,479.18	103.138665	6.84%	-3.35%	4.66%	6.89%	2.14%
25-Oct-23	20,938,052.17	103.132953	7.00%	-3.28%	4.71%	6.90%	2.14%
24-Oct-23	20,935,731.79	103.121524	7.09%	-3.25%	4.73%	6.91%	2.15%
23-Oct-23	20,933,161.95	103.108866	7.16%	-3.22%	4.75%	6.91%	2.15%
22-Oct-23	20,930,708.97	103.096783	7.24%	-3.19%	4.78%	6.91%	2.15%
21-Oct-23	20,928,267.97	103.084760	7.31%	-3.15%	4.80%	6.91%	2.15%
20-Oct-23	20,925,827.00	103.072737	7.40%	-3.11%	4.83%	6.91%	2.15%
19-Oct-23	20,923,024.48	103.058933	7.45%	-3.09%	4.85%	6.91%	2.15%
18-Oct-23	20,920,595.93	103.046970	7.56%	-3.06%	4.87%	6.91%	2.15%
17-Oct-23	20,918,175.30	103.035047	7.64%	-3.03%	4.90%	6.94%	2.16%
16-Oct-23	20,912,842.38	103.008779	7.58%	-3.07%	4.87%	6.94%	2.16%
15-Oct-23	20,907,497.27	102.982451	7.52%	-3.12%	4.83%	6.93%	2.16%
14-Oct-23	20,903,322.11	102.961886	7.52%	-3.14%	4.82%	6.93%	2.16%
13-Oct-23	20,899,146.78	102.941320	7.54%	-3.15%	4.82%	6.94%	2.16%
12-Oct-23	20,894,956.62	102.920681	7.54%	-3.15%	4.81%	6.94%	2.16%
11-Oct-23	20,890,781.04	102.900113	7.55%	-3.16%	4.81%	6.94%	2.16%
10-Oct-23	20,886,569.84	102.879371	7.56%	-3.17%	4.81%	6.94%	2.16%
9-Oct-23	20,882,418.78	102.858924	7.57%	-3.18%	4.80%	6.94%	2.16%
8-Oct-23	20,878,240.28	102.838342	7.58%	-3.18%	4.80%	6.94%	2.16%
7-Oct-23	20,874,063.97	102.817772	7.59%	-3.19%	4.80%	6.94%	2.16%
6-Oct-23	20,869,887.49	102.797200	7.60%	7.28%	4.79%	3.48%	0.45%
5-Oct-23	21,221,785.42	104.530516	7.67%	7.30%	4.81%	3.45%	2.13%
4-Oct-23	21,215,655.23	104.500321	7.56%	7.24%	4.77%	3.43%	2.12%
3-Oct-23	21,212,159.75	104.483104	7.62%	7.27%	4.79%	3.43%	2.12%
2-Oct-23	21,208,479.29	104.464975	7.73%	7.32%	4.82%	3.43%	2.12%
1-Oct-23	21,205,022.83	104.447950	7.85%	7.39%	4.87%	6.61%	2.13%
30-Sep-23	21,200,122.54	104.423813	7.88%	7.40%	4.87%	6.57%	2.11%
29-Sep-23	21,199,329.27	104.419906	7.85%	7.35%	4.84%	6.69%	2.17%
28-Sep-23	21,185,704.40	104.352795	7.17%	7.02%	4.63%	6.60%	2.12%
27-Sep-23	21,182,741.07	104.338199	7.15%	7.02%	4.63%	6.60%	2.13%
26-Sep-23	21,179,027.68	104.319908	7.08%	6.99%	4.60%	6.61%	2.13%
25-Sep-23	21,175,268.36	104.301391	7.07%	6.98%	4.60%	6.61%	2.13%
24-Sep-23	21,171,539.20	104.283022	7.06%	6.96%	4.59%	6.61%	2.13%
23-Sep-23	21,167,796.67	104.264588	7.05%	6.97%	4.59%	6.61%	2.13%

1-Jan-25	24,787,456.03	107.551302	40.70%	33.51%	14.63%	2.98%	2.07%
31-Dec-24	24,782,622.37	107.530329	40.69%	33.53%	14.63%	2.77%	1.96%
30-Dec-24	24,803,255.16	107.619853	42.45%	34.15%	14.99%	6.19%	3.65%
22-Sep-23	21,164,053.99	104.246153	7.04%	6.97%	4.60%	6.61%	2.13%
21-Sep-23	21,160,479.07	104.228544	7.04%	6.98%	4.60%	6.61%	2.13%
20-Sep-23	21,156,637.96	104.209624	7.03%	6.98%	4.60%	6.61%	2.13%
19-Sep-23	21,152,951.91	104.191468	7.05%	6.99%	4.61%	6.62%	2.13%
18-Sep-23	21,148,846.29	104.171246	7.02%	7.00%	4.61%	6.62%	2.13%
17-Sep-23	21,145,097.24	104.152779	7.01%	7.01%	4.62%	6.62%	2.13%
16-Sep-23	21,140,792.80	104.131577	6.97%	7.00%	4.61%	6.62%	2.13%
15-Sep-23	21,136,488.18	104.110374	6.93%	6.98%	4.60%	6.62%	2.13%
14-Sep-23	21,132,221.79	104.089360	6.90%	6.98%	4.60%	6.63%	2.13%
13-Sep-23	21,127,868.51	104.067917	6.85%	6.97%	4.60%	6.63%	2.13%
12-Sep-23	21,123,589.13	104.046838	6.83%	6.97%	4.59%	6.63%	2.13%
11-Sep-23	21,119,289.14	104.025658	6.81%	6.96%	4.59%	6.63%	2.14%
10-Sep-23	21,114,960.52	104.004337	6.79%	6.95%	4.58%	6.63%	2.14%
9-Sep-23	21,110,667.68	103.983192	6.77%	6.95%	4.58%	6.63%	2.14%
8-Sep-23	21,106,356.93	103.961959	6.74%	6.94%	4.58%	6.63%	2.14%
7-Sep-23	21,102,057.32	103.940781	6.72%	6.94%	4.57%	6.64%	2.14%
6-Sep-23	21,097,739.28	103.919512	6.70%	6.94%	4.57%	6.64%	2.14%
5-Sep-23	21,093,329.01	103.897788	6.68%	-3.51%	-2.36%	6.64%	2.14%
4-Sep-23	21,088,985.97	103.876396	6.67%	-3.52%	-2.36%	6.64%	2.14%
3-Sep-23	21,084,544.68	103.854520	6.66%	-3.53%	-2.37%	6.65%	2.14%
2-Sep-23	21,079,149.66	103.827946	6.59%	-3.56%	-2.39%	6.65%	2.14%
1-Sep-23	21,073,749.40	103.801347	6.59%	-3.60%	-2.41%	6.65%	2.15%
31-Aug-23	21,068,353.16	103.774767	6.40%	6.39%	6.05%	6.61%	7.69%
30-Aug-23	21,068,026.64	103.773159	6.69%	6.50%	6.13%	6.63%	7.70%
29-Aug-23	21,065,403.57	103.760238	6.48%	6.54%	6.16%	6.63%	7.70%
28-Aug-23	21,062,920.02	103.748005	6.51%	6.41%	6.10%	6.63%	7.70%
27-Aug-23	21,060,331.48	103.735255	6.53%	6.41%	6.12%	6.64%	7.71%
26-Aug-23	21,056,732.12	103.717526	6.48%	6.39%	6.11%	6.64%	7.71%
25-Aug-23	21,053,132.62	103.699796	6.47%	6.38%	6.11%	6.64%	7.71%
24-Aug-23	21,049,609.66	103.682443	6.45%	6.38%	6.10%	6.65%	7.71%
23-Aug-23	21,046,009.29	103.664709	6.47%	6.38%	6.10%	6.65%	7.71%
22-Aug-23	21,042,409.36	103.646977	6.49%	6.38%	6.10%	6.65%	7.72%
21-Aug-23	21,038,805.21	103.629225	6.50%	6.37%	6.09%	6.65%	7.72%
20-Aug-23	21,034,857.33	103.609779	6.50%	6.39%	6.09%	6.65%	7.72%
19-Aug-23	21,031,256.98	103.592045	6.51%	6.44%	6.09%	6.65%	7.72%
18-Aug-23	21,027,656.48	103.574310	6.55%	6.45%	6.09%	6.65%	7.72%
17-Aug-23	21,024,085.51	103.556721	6.58%	6.47%	6.10%	6.65%	7.72%
16-Aug-23	21,020,344.43	103.538294	6.59%	6.48%	6.10%	6.65%	7.72%
15-Aug-23	21,016,711.92	103.520402	6.60%	6.50%	6.13%	6.66%	7.73%
14-Aug-23	21,013,140.08	103.502808	6.64%	6.51%	6.15%	6.66%	7.73%
13-Aug-23	21,009,229.66	103.483547	6.65%	6.53%	6.15%	6.66%	7.73%
12-Aug-23	21,005,283.70	103.464110	6.66%	6.54%	6.16%	6.66%	7.73%
11-Aug-23	21,001,337.58	103.444673	6.66%	6.56%	6.16%	6.66%	7.73%
10-Aug-23	20,997,387.65	103.425217	6.67%	6.58%	6.17%	6.66%	7.73%
9-Aug-23	20,993,510.12	103.406118	6.68%	6.59%	6.18%	6.67%	7.74%
8-Aug-23	20,989,535.30	103.386540	6.69%	6.60%	6.18%	6.67%	7.74%
7-Aug-23	20,985,527.90	103.366801	6.70%	6.62%	6.18%	6.67%	7.74%
6-Aug-23	20,981,502.36	103.346973	6.71%	6.63%	6.19%	6.67%	7.74%
5-Aug-23	20,977,335.26	103.326447	6.59%	6.64%	6.19%	6.67%	7.74%
4-Aug-23	20,973,167.99	103.305921	6.59%	6.64%	6.20%	6.68%	7.74%
3-Aug-23	20,968,945.16	103.285120	6.58%	6.65%	6.20%	6.69%	7.75%
2-Aug-23	20,963,519.26	103.258395	6.51%	6.62%	6.17%	6.69%	7.75%
1-Aug-23	20,958,080.34	103.231604	6.44%	6.59%	6.15%	6.69%	7.76%
31-Jul-23	20,952,781.74	103.205506	6.38%	6.57%	6.13%	6.63%	7.73%
30-Jul-23	20,953,757.24	103.210311	6.67%	6.72%	6.24%	6.67%	7.75%
29-Jul-23	20,950,827.81	103.195881	6.39%	6.62%	6.27%	6.67%	7.75%
28-Jul-23	20,947,898.26	103.181451	6.36%	6.64%	6.24%	6.67%	7.75%
27-Jul-23	20,945,253.26	103.168423	6.38%	6.65%	6.21%	6.68%	7.75%
26-Jul-23	20,941,795.55	103.151392	6.37%	6.65%	6.16%	6.68%	7.75%
25-Jul-23	20,938,574.31	103.135525	6.38%	6.65%	6.17%	6.68%	7.76%
24-Jul-23	20,934,732.60	103.116602	6.37%	6.64%	6.16%	6.68%	7.76%
23-Jul-23	20,930,834.74	103.097403	6.35%	6.62%	6.18%	6.69%	7.76%
22-Jul-23	20,926,991.33	103.078472	6.32%	6.61%	6.13%	6.69%	7.76%
21-Jul-23	20,923,147.77	103.059540	6.37%	6.60%	6.13%	6.69%	7.76%
20-Jul-23	20,919,317.26	103.040672	6.44%	6.60%	6.13%	6.69%	7.77%
19-Jul-23	20,914,996.07	103.019388	6.43%	6.59%	6.12%	6.69%	7.77%
18-Jul-23	20,910,919.55	102.999308	6.43%	6.58%	6.11%	6.69%	7.77%
17-Jul-23	20,907,097.80	102.980484	6.45%	6.57%	6.11%	6.69%	7.77%
16-Jul-23	20,903,276.96	102.961664	6.47%	6.61%	6.12%	6.70%	7.77%

1-Jan-25	24,787,456.03	107.551302	40.70%	33.51%	14.63%	2.98%	2.07%
31-Dec-24	24,782,622.37	107.530329	40.69%	33.53%	14.63%	2.77%	1.96%
30-Dec-24	24,803,255.16	107.619853	42.45%	34.15%	14.99%	6.19%	3.65%
15-Jul-23	20,899,159.12	102.941381	6.47%	6.63%	6.13%	6.70%	7.77%
14-Jul-23	20,895,041.11	102.921097	6.48%	6.63%	6.13%	6.70%	7.77%
13-Jul-23	20,891,006.70	102.901225	6.50%	6.63%	6.14%	6.70%	7.77%
12-Jul-23	20,886,969.85	102.881341	6.53%	6.64%	6.15%	6.70%	7.78%
11-Jul-23	20,882,904.46	102.861316	6.56%	6.65%	6.17%	6.70%	7.78%
10-Jul-23	20,878,842.15	102.841307	6.58%	6.65%	6.18%	9.17%	7.78%
9-Jul-23	20,874,736.03	102.821082	6.59%	6.65%	6.18%	9.17%	7.78%
8-Jul-23	20,870,576.02	102.800591	6.61%	6.65%	6.19%	9.17%	7.78%
7-Jul-23	20,866,415.84	102.780100	6.63%	6.65%	6.20%	5.72%	6.08%
6-Jul-23	21,217,660.00	104.510196	6.64%	6.66%	13.11%	5.63%	5.98%
5-Jul-23	21,213,573.78	104.490069	6.66%	6.67%	13.12%	5.63%	5.98%
4-Jul-23	21,209,502.23	104.470014	6.69%	6.68%	13.13%	5.63%	5.98%
3-Jul-23	21,205,254.91	104.449093	6.70%	6.67%	6.60%	5.63%	5.98%
2-Jul-23	21,201,076.71	104.428513	6.71%	6.68%	6.61%	5.63%	5.99%
1-Jul-23	21,196,985.02	104.408359	6.72%	6.69%	6.62%	5.63%	5.99%
30-Jun-23	21,192,893.07	104.388203	6.74%	6.70%	6.63%	5.58%	5.96%
29-Jun-23	21,194,814.08	104.397666	6.81%	6.88%	6.75%	5.62%	5.98%
28-Jun-23	21,192,438.15	104.385963	6.88%	6.85%	6.73%	5.62%	5.98%
27-Jun-23	21,189,401.84	104.371007	6.88%	6.80%	6.70%	5.63%	5.98%
26-Jun-23	21,186,183.47	104.355155	6.89%	6.73%	6.69%	5.63%	5.99%
25-Jun-23	21,182,751.95	104.338252	6.89%	6.73%	6.70%	5.63%	5.99%
24-Jun-23	21,179,186.79	104.320692	6.88%	6.73%	6.70%	5.63%	5.99%
23-Jun-23	21,175,621.48	104.303130	6.86%	6.77%	6.71%	5.63%	5.99%
22-Jun-23	21,172,275.82	104.286651	6.86%	6.71%	6.72%	5.64%	6.00%
21-Jun-23	21,167,679.96	104.264013	6.81%	6.68%	6.71%	5.65%	6.00%
20-Jun-23	21,162,607.56	104.239028	6.73%	6.64%	6.69%	5.64%	6.00%
19-Jun-23	21,158,497.76	104.218785	6.71%	6.64%	6.70%	5.64%	6.00%
18-Jun-23	21,154,405.45	104.198628	6.69%	6.62%	6.71%	5.64%	6.00%
17-Jun-23	21,150,280.58	104.178310	6.66%	6.62%	6.70%	5.65%	6.00%
16-Jun-23	21,146,155.54	104.157992	6.72%	6.62%	6.69%	5.65%	6.00%
15-Jun-23	21,142,058.12	104.137810	6.75%	6.63%	6.69%	5.65%	6.00%
14-Jun-23	21,137,712.90	104.116407	6.74%	6.63%	6.70%	5.65%	6.00%
13-Jun-23	21,133,361.27	104.094972	6.73%	6.64%	6.70%	5.65%	6.01%
12-Jun-23	21,128,880.84	104.072903	6.72%	6.64%	6.70%	5.66%	6.01%
11-Jun-23	21,124,325.43	104.050465	6.70%	6.64%	6.71%	5.65%	6.01%
10-Jun-23	21,119,945.62	104.028892	6.69%	6.65%	6.72%	5.66%	6.01%
9-Jun-23	21,115,565.63	104.007318	6.67%	6.65%	6.72%	5.66%	6.01%
8-Jun-23	21,111,149.73	103.985567	6.66%	6.66%	6.72%	5.66%	6.01%
7-Jun-23	21,106,766.56	103.963977	6.65%	6.66%	6.72%	5.66%	6.01%
6-Jun-23	21,102,415.59	103.942546	6.65%	6.66%	6.73%	5.66%	6.01%
5-Jun-23	21,098,096.86	103.921273	6.64%	6.67%	6.77%	5.66%	6.02%
4-Jun-23	21,093,588.63	103.899067	6.63%	6.67%	6.78%	5.66%	6.02%
3-Jun-23	21,089,201.59	103.877458	6.61%	6.57%	6.78%	5.66%	6.02%
2-Jun-23	21,084,846.90	103.856009	6.61%	6.58%	6.78%	5.66%	6.02%
1-Jun-23	21,080,539.71	103.834793	6.61%	6.59%	6.79%	5.67%	6.02%
31-May-23	21,076,155.34	103.813197	6.63%	6.59%	6.80%	5.62%	6.00%
30-May-23	21,076,913.83	103.816933	6.92%	6.73%	6.92%	5.66%	6.02%
29-May-23	21,073,293.49	103.799101	6.78%	6.67%	6.94%	5.66%	6.02%
28-May-23	21,070,294.22	103.784328	6.68%	6.63%	6.93%	5.66%	6.02%
27-May-23	21,066,899.19	103.767605	6.54%	6.61%	6.91%	5.66%	6.02%
26-May-23	21,063,504.02	103.750882	6.54%	6.62%	6.89%	5.66%	6.02%
25-May-23	21,060,159.43	103.734408	6.55%	6.63%	6.88%	5.66%	6.02%
24-May-23	21,056,825.07	103.717984	6.63%	6.65%	6.86%	5.66%	6.02%
23-May-23	21,053,582.68	103.702013	6.52%	6.67%	6.88%	5.67%	6.02%
22-May-23	21,049,932.60	103.684034	6.52%	6.68%	6.89%	5.67%	6.03%
21-May-23	21,046,201.32	103.665655	6.52%	6.69%	6.89%	5.67%	6.03%
20-May-23	21,042,422.66	103.647043	6.53%	6.70%	6.90%	5.67%	6.03%
19-May-23	21,038,643.85	103.628430	6.52%	6.73%	6.91%	5.67%	6.03%
18-May-23	21,035,053.06	103.610743	6.54%	6.73%	6.92%	5.69%	6.04%
17-May-23	21,029,971.30	103.585712	6.48%	6.70%	6.90%	5.68%	6.04%
16-May-23	21,025,452.54	103.563455	6.47%	6.68%	6.91%	5.68%	6.04%
15-May-23	21,021,292.87	103.542966	6.49%	6.70%	6.93%	5.68%	6.04%
14-May-23	21,017,112.90	103.522377	6.51%	6.71%	6.94%	5.68%	6.04%
13-May-23	21,012,906.29	103.501656	6.52%	6.71%	6.96%	5.68%	6.04%
12-May-23	21,008,699.51	103.480935	6.56%	6.74%	6.97%	5.68%	6.04%
11-May-23	21,004,535.26	103.460424	6.57%	6.75%	6.99%	5.68%	6.04%
10-May-23	21,000,415.59	103.440132	6.59%	6.76%	7.00%	5.69%	6.04%
9-May-23	20,996,290.14	103.419812	6.62%	6.77%	7.02%	5.69%	6.04%
8-May-23	20,992,064.27	103.398997	6.63%	6.78%	7.04%	5.69%	6.05%

1-Jan-25	24,787,456.03	107.551302	40.70%	33.51%	14.63%	2.98%	2.07%
31-Dec-24	24,782,622.37	107.530329	40.69%	33.53%	14.63%	2.77%	1.96%
30-Dec-24	24,803,255.16	107.619853	42.45%	34.15%	14.99%	6.19%	3.65%
7-May-23	20,987,722.01	103.377608	6.64%	6.78%	7.06%	5.69%	6.05%
6-May-23	20,983,508.50	103.356854	6.65%	6.85%	7.07%	5.69%	6.05%
5-May-23	20,979,294.81	103.336099	6.68%	6.86%	7.09%	5.69%	6.05%
4-May-23	20,975,181.84	103.315840	6.60%	6.88%	7.10%	5.69%	6.05%
3-May-23	20,970,924.50	103.294870	6.61%	6.89%	7.11%	5.70%	6.05%
2-May-23	20,966,575.89	103.273450	6.63%	6.89%	7.18%	5.70%	6.05%
1-May-23	20,961,935.49	103.250593	6.61%	6.90%	7.13%	5.70%	6.05%
30-Apr-23	20,957,772.12	103.230086	6.62%	6.94%	6.95%	5.67%	6.04%
29-Apr-23	20,956,508.87	103.223864	6.64%	7.04%	7.00%	5.67%	6.04%
28-Apr-23	20,955,324.32	103.218029	6.66%	7.06%	7.05%	5.67%	6.04%
27-Apr-23	20,954,241.95	103.212698	6.75%	7.11%	7.11%	5.69%	6.05%
26-Apr-23	20,950,859.38	103.196037	6.76%	7.08%	7.12%	5.69%	6.05%
25-Apr-23	20,947,455.83	103.179272	6.77%	7.06%	7.13%	5.71%	6.06%
24-Apr-23	20,942,717.15	103.155931	6.73%	7.00%	7.11%	5.67%	6.05%
23-Apr-23	20,941,402.68	103.149457	6.88%	7.08%	7.16%	5.70%	6.06%
22-Apr-23	20,937,687.26	103.131156	6.91%	7.08%	7.16%	5.70%	6.06%
21-Apr-23	20,933,971.70	103.112854	6.93%	7.09%	7.17%	5.70%	6.06%
20-Apr-23	20,930,123.96	103.093902	6.94%	7.10%	7.17%	5.70%	6.06%
19-Apr-23	20,926,566.15	103.076377	7.02%	7.12%	7.17%	5.70%	6.06%
18-Apr-23	20,922,567.97	103.056684	6.98%	7.12%	7.17%	5.71%	6.06%
17-Apr-23	20,918,565.03	103.036967	6.98%	7.13%	7.17%	5.71%	6.07%
16-Apr-23	20,914,186.84	103.015402	6.96%	7.14%	7.15%	5.71%	6.07%
15-Apr-23	20,909,731.82	102.993458	6.97%	7.16%	7.15%	5.71%	6.07%
14-Apr-23	20,905,276.62	102.971513	6.97%	7.17%	7.14%	5.71%	6.07%
13-Apr-23	20,900,821.23	102.949568	6.97%	7.19%	7.13%	5.72%	6.07%
12-Apr-23	20,896,090.74	102.926267	6.98%	7.19%	7.12%	5.72%	6.07%
11-Apr-23	20,891,644.64	102.904367	6.99%	7.21%	23.56%	5.72%	6.08%
10-Apr-23	20,887,265.23	102.882796	6.99%	7.22%	23.27%	5.72%	6.08%
9-Apr-23	20,882,681.72	102.860219	6.99%	7.23%	23.07%	5.72%	6.08%
8-Apr-23	20,878,245.42	102.838368	6.99%	7.26%	22.88%	5.72%	6.08%
7-Apr-23	20,873,808.94	102.816515	6.99%	7.28%	22.70%	5.72%	7.15%
6-Apr-23	20,869,372.28	102.794662	7.12%	7.30%	22.51%	5.73%	7.15%
5-Apr-23	20,864,802.17	102.772151	7.12%	7.31%	22.26%	2.51%	5.57%
4-Apr-23	21,191,113.11	104.379436	7.12%	7.31%	6.98%	2.47%	5.48%
3-Apr-23	21,186,699.03	104.357694	7.12%	7.32%	6.97%	4.42%	5.48%
2-Apr-23	21,182,015.64	104.334625	7.12%	7.42%	6.96%	4.41%	5.48%
1-Apr-23	21,177,791.04	104.313817	7.15%	7.35%	6.96%	4.42%	5.48%
31-Mar-23	21,173,464.19	104.292504	7.22%	7.08%	6.96%	4.39%	5.47%
30-Mar-23	21,171,920.99	104.284903	7.40%	7.14%	6.98%	4.39%	5.47%
29-Mar-23	21,170,382.50	104.277325	7.43%	7.21%	6.95%	4.40%	5.48%
28-Mar-23	21,167,676.15	104.263994	7.42%	7.25%	15.05%	4.41%	5.48%
27-Mar-23	21,164,230.36	104.247022	7.37%	7.26%	14.98%	4.41%	5.49%
26-Mar-23	21,160,571.74	104.229001	7.30%	7.26%	15.02%	4.42%	5.49%
25-Mar-23	21,156,611.28	104.209493	7.22%	7.26%	15.06%	4.42%	5.49%
24-Mar-23	21,152,631.67	104.189891	7.23%	7.26%	15.10%	4.42%	5.49%
23-Mar-23	21,148,563.58	104.169853	7.22%	7.25%	15.13%	4.42%	5.49%
22-Mar-23	21,144,494.02	104.149808	7.22%	7.24%	15.17%	4.42%	5.49%
21-Mar-23	21,140,427.48	104.129778	7.22%	7.24%	15.21%	4.43%	5.50%
20-Mar-23	21,135,605.16	104.106025	7.18%	7.21%	15.16%	4.41%	5.49%
19-Mar-23	21,132,314.84	104.089818	7.23%	7.22%	15.15%	4.42%	5.49%
18-Mar-23	21,128,342.86	104.070253	7.24%	7.22%	15.13%	4.42%	5.50%
17-Mar-23	21,124,270.71	104.050196	7.28%	7.21%	15.14%	4.43%	5.50%
16-Mar-23	21,119,725.01	104.027805	7.31%	7.20%	15.14%	4.43%	5.50%
15-Mar-23	21,115,265.38	104.005839	7.34%	7.18%	15.14%	4.43%	5.50%
14-Mar-23	21,110,817.73	103.983931	7.36%	7.18%	15.14%	4.44%	5.51%
13-Mar-23	21,105,848.72	103.959456	7.36%	7.15%	15.13%	4.43%	5.50%
12-Mar-23	21,101,368.59	103.937388	7.38%	-0.26%	15.13%	4.43%	5.51%
11-Mar-23	21,096,921.55	103.915484	7.41%	-0.28%	15.13%	4.43%	5.51%
10-Mar-23	21,092,474.32	103.893579	7.44%	-0.29%	15.12%	4.43%	5.51%
9-Mar-23	21,088,019.77	103.871637	7.49%	-0.30%	15.11%	4.44%	5.51%
8-Mar-23	21,083,563.02	103.849685	7.52%	-0.31%	15.11%	4.46%	5.52%
7-Mar-23	21,077,013.92	103.817426	7.43%	-0.39%	15.05%	4.44%	5.51%
6-Mar-23	21,072,481.46	103.795101	7.46%	-0.40%	15.05%	4.44%	5.51%
5-Mar-23	21,067,886.49	103.772468	7.47%	-0.41%	15.05%	4.44%	5.51%
4-Mar-23	21,063,438.05	103.750557	7.49%	-0.42%	15.05%	4.44%	5.52%
3-Mar-23	21,058,854.50	103.727980	7.67%	-0.44%	15.05%	4.44%	5.52%
2-Mar-23	21,054,099.91	103.704561	7.51%	-0.46%	15.04%	4.45%	5.52%
1-Mar-23	21,048,608.61	103.677513	6.89%	-0.50%	15.01%	4.45%	5.52%
28-Feb-23	21,043,895.13	103.654296	6.84%	-0.56%	14.99%	4.42%	5.51%

1-Jan-25	24,787,456.03	107.551302	40.70%	33.51%	14.63%	2.98%	2.07%
31-Dec-24	24,782,622.37	107.530329	40.69%	33.53%	14.63%	2.77%	1.96%
30-Dec-24	24,803,255.16	107.619853	42.45%	34.15%	14.99%	6.19%	3.65%
27-Feb-23	21,041,905.24	103.644494	6.95%	-0.62%	14.87%	4.43%	5.51%
26-Feb-23	21,039,368.63	103.632000	7.03%	11.32%	14.89%	4.43%	5.51%
25-Feb-23	21,036,831.92	103.619505	7.10%	11.24%	14.92%	4.43%	5.51%
24-Feb-23	21,034,295.10	103.607010	7.18%	11.34%	14.95%	4.43%	5.51%
23-Feb-23	21,031,765.32	103.594549	7.26%	11.43%	14.98%	4.44%	5.52%
22-Feb-23	21,027,676.98	103.574411	7.24%	11.48%	14.98%	4.44%	5.52%
21-Feb-23	21,023,874.69	103.555683	7.24%	11.54%	14.98%	4.45%	5.52%
20-Feb-23	21,019,775.99	103.535494	7.22%	11.59%	14.98%	4.45%	5.52%
19-Feb-23	21,015,672.80	103.515283	7.21%	11.64%	14.98%	4.45%	5.53%
18-Feb-23	21,011,583.30	103.495140	7.19%	11.59%	14.98%	4.45%	5.53%
17-Feb-23	21,007,493.63	103.474996	7.17%	11.55%	14.97%	4.45%	5.53%
16-Feb-23	21,003,397.28	103.454819	7.16%	11.52%	14.97%	4.46%	5.53%
15-Feb-23	20,998,541.62	103.430901	7.10%	11.51%	14.96%	4.46%	5.53%
14-Feb-23	20,993,575.93	103.406442	7.04%	11.49%	14.94%	4.46%	5.54%
13-Feb-23	20,988,713.65	103.382493	6.99%	11.48%	14.92%	4.46%	5.54%
12-Feb-23	20,983,842.92	103.358501	6.95%	11.46%	14.90%	4.46%	5.54%
11-Feb-23	20,978,980.45	103.334551	6.89%	11.45%	14.88%	4.46%	5.54%
10-Feb-23	20,974,118.53	103.310603	6.77%	11.43%	14.87%	4.46%	5.54%
9-Feb-23	20,969,252.59	103.286635	6.70%	11.42%	14.85%	4.47%	5.54%
8-Feb-23	20,964,319.33	103.262335	6.66%	11.39%	14.88%	4.47%	5.55%
7-Feb-23	20,958,950.22	103.235889	6.59%	11.35%	14.85%	4.47%	5.55%
6-Feb-23	20,953,988.20	103.211448	6.54%	11.32%	14.83%	4.47%	5.55%
5-Feb-23	20,949,049.78	103.187123	6.49%	11.29%	14.81%	4.47%	5.55%
4-Feb-23	20,944,129.82	103.162889	6.44%	11.28%	14.79%	4.47%	5.55%
3-Feb-23	20,939,344.67	103.139320	6.40%	11.26%	14.78%	4.47%	5.55%
2-Feb-23	20,934,630.61	103.116100	6.37%	11.25%	14.76%	4.50%	5.56%
1-Feb-23	20,926,901.28	103.078028	6.16%	11.15%	14.68%	4.45%	5.54%
31-Jan-23	20,924,952.14	103.068427	6.28%	11.22%	14.72%	4.38%	5.51%
30-Jan-23	20,930,004.88	103.093315	6.81%	11.49%	14.87%	4.46%	5.55%
29-Jan-23	20,926,191.25	103.074531	6.74%	11.49%	14.88%	4.46%	5.55%
28-Jan-23	20,922,365.05	103.055684	6.52%	11.25%	14.87%	4.46%	5.55%
27-Jan-23	20,918,538.65	103.036837	30.48%	11.25%	14.86%	4.47%	5.55%
26-Jan-23	20,914,704.21	103.017950	30.23%	11.25%	14.85%	4.47%	5.55%
25-Jan-23	20,910,877.61	102.999102	30.36%	11.25%	14.84%	4.47%	5.55%
24-Jan-23	20,907,046.93	102.980233	30.46%	11.26%	14.84%	4.47%	5.55%
23-Jan-23	20,903,243.68	102.961500	30.58%	11.26%	14.84%	4.47%	5.55%
22-Jan-23	20,899,460.51	102.942865	30.71%	11.26%	14.93%	4.47%	5.56%
21-Jan-23	20,895,690.18	102.924294	30.83%	11.27%	14.83%	4.47%	5.56%
20-Jan-23	20,891,919.69	102.905722	30.96%	11.27%	14.82%	4.47%	5.56%
19-Jan-23	20,888,142.27	102.887116	30.88%	11.28%	14.82%	4.47%	5.56%
18-Jan-23	20,884,354.72	102.868460	30.81%	11.28%	14.82%	4.47%	5.56%
17-Jan-23	20,880,578.68	102.849861	30.77%	11.28%	14.76%	4.47%	5.56%
16-Jan-23	20,876,793.24	102.831215	30.81%	11.29%	14.76%	4.48%	5.56%
15-Jan-23	20,872,851.24	102.811798	30.83%	11.29%	14.72%	4.48%	5.56%
14-Jan-23	20,868,786.69	102.791778	30.86%	11.28%	14.68%	4.48%	5.56%
13-Jan-23	20,864,721.97	102.771756	30.88%	11.28%	14.65%	4.48%	5.57%
12-Jan-23	20,860,766.41	102.752273	30.90%	18.81%	14.62%	2.01%	4.35%
11-Jan-23	21,110,491.00	103.982322	42.92%	18.81%	14.59%	1.99%	2.13%
10-Jan-23	21,106,710.53	103.963701	42.96%	18.81%	14.56%	1.99%	2.14%
9-Jan-23	21,102,531.68	103.943117	42.95%	18.89%	14.53%	1.99%	2.14%
8-Jan-23	21,098,476.04	103.923141	42.95%	18.88%	14.50%	1.99%	2.14%
7-Jan-23	21,094,420.23	103.903163	42.96%	18.88%	14.47%	1.99%	2.14%
6-Jan-23	21,090,364.27	103.883185	42.95%	18.87%	14.43%	1.99%	2.14%
5-Jan-23	21,086,300.13	103.863167	42.98%	18.87%	14.40%	1.99%	2.14%
4-Jan-23	21,082,187.58	103.842910	42.99%	18.86%	15.38%	1.99%	2.14%
3-Jan-23	21,078,078.14	103.822668	43.01%	18.86%	15.20%	4.43%	3.20%
2-Jan-23	21,073,950.53	103.802337	43.03%	18.85%	15.18%	4.43%	3.20%
1-Jan-23	21,069,894.37	103.782358	43.05%	18.85%	15.17%	4.44%	3.20%
31-Dec-22	21,065,837.95	103.762378	43.04%	18.80%	15.12%	4.42%	3.19%
30-Dec-22	21,063,314.41	103.749948	43.12%	18.84%	15.11%	4.40%	3.18%
29-Dec-22	21,063,319.62	103.749974	42.87%	18.94%	15.15%	8.33%	5.12%
28-Dec-22	20,654,930.75	101.738404	18.90%	6.88%	7.11%	4.48%	3.24%
27-Dec-22	20,655,252.74	101.739990	19.16%	6.99%	7.13%	4.54%	3.27%
26-Dec-22	20,649,371.94	101.711023	19.04%	6.91%	7.03%	4.54%	3.27%
25-Dec-22	20,643,967.24	101.684402	18.95%	6.85%	6.98%	4.54%	3.27%
24-Dec-22	20,638,228.72	101.656136	18.84%	6.79%	6.90%	4.54%	3.27%
23-Dec-22	20,632,489.96	101.627869	18.73%	6.87%	6.81%	4.55%	3.27%
22-Dec-22	20,626,759.46	101.599643	18.63%	6.65%	6.72%	4.55%	3.28%
21-Dec-22	20,620,987.80	101.571214	18.52%	6.59%	6.65%	4.51%	3.26%

1-Jan-25	24,787,456.03	107.551302	40.70%	33.51%	14.63%	2.98%	2.07%
31-Dec-24	24,782,622.37	107.530329	40.69%	33.53%	14.63%	2.77%	1.96%
30-Dec-24	24,803,255.16	107.619853	42.45%	34.15%	14.99%	6.19%	3.65%
20-Dec-22	20,618,647.71	101.559687	18.61%	6.63%	33.06%	4.52%	3.26%
19-Dec-22	20,616,056.14	101.546922	18.68%	6.66%	6.87%	4.52%	3.26%
18-Dec-22	20,613,001.04	101.531874	18.73%	6.59%	6.84%	4.54%	3.27%
17-Dec-22	20,608,747.29	101.510922	18.72%	6.57%	6.81%	4.54%	3.27%
16-Dec-22	20,604,493.36	101.489968	18.70%	6.50%	6.76%	4.54%	3.27%
15-Dec-22	20,600,114.59	101.468400	18.67%	6.43%	6.71%	4.54%	3.27%
14-Dec-22	20,595,828.13	101.447287	18.64%	6.38%	6.92%	4.54%	3.27%
13-Dec-22	20,591,553.79	101.426233	18.62%	6.32%	6.87%	4.54%	3.27%
12-Dec-22	20,587,239.98	101.404985	18.59%	6.26%	6.85%	4.54%	3.28%
11-Dec-22	20,582,954.33	101.383875	18.57%	6.21%	6.84%	4.54%	3.27%
10-Dec-22	20,579,021.12	101.364502	18.72%	6.16%	6.83%	4.54%	3.27%
9-Dec-22	20,575,087.75	101.345127	18.71%	6.11%	6.81%	4.54%	3.28%
8-Dec-22	20,571,138.43	101.325674	18.71%	6.07%	6.79%	4.54%	3.28%
7-Dec-22	20,567,313.55	101.306835	18.71%	6.03%	6.78%	4.55%	3.28%
6-Dec-22	20,562,970.46	101.285442	18.68%	5.97%	6.75%	4.55%	3.28%
5-Dec-22	20,558,785.47	101.264828	18.66%	7.39%	6.73%	4.55%	3.28%
4-Dec-22	20,554,474.28	101.243593	18.64%	8.78%	6.72%	4.55%	3.28%
3-Dec-22	20,550,222.12	101.222649	18.61%	8.74%	6.70%	4.55%	3.28%
2-Dec-22	20,545,937.04	101.201542	18.59%	8.71%	6.68%	4.55%	3.28%
1-Dec-22	20,542,172.98	101.183002	18.51%	8.65%	6.66%	4.55%	3.28%
30-Nov-22	20,538,424.78	101.164539	18.52%	8.60%	6.67%	4.47%	3.24%
29-Nov-22	20,542,534.16	101.184781	18.96%	8.77%	6.82%	4.55%	3.28%
28-Nov-22	20,538,816.26	101.166468	18.94%	8.73%	6.79%	4.55%	3.28%
27-Nov-22	20,534,926.12	101.147306	18.90%	8.62%	6.79%	4.55%	3.28%
26-Nov-22	20,531,086.93	101.128396	18.87%	8.55%	6.78%	4.55%	3.28%
25-Nov-22	20,527,247.59	101.109485	18.85%	8.51%	6.75%	4.55%	3.28%
24-Nov-22	20,523,468.81	101.090872	18.84%	8.45%	6.73%	4.55%	3.28%
23-Nov-22	20,519,610.05	101.071865	19.11%	8.37%	6.70%	4.55%	3.28%
22-Nov-22	20,515,690.65	101.052560	18.79%	8.30%	6.67%	4.55%	3.28%
21-Nov-22	20,511,822.98	101.033509	18.78%	8.24%	6.65%	4.55%	3.29%
20-Nov-22	20,507,975.31	101.014557	18.77%	47.70%	6.63%	4.55%	3.29%
19-Nov-22	20,504,189.24	100.995908	18.76%	8.48%	6.61%	4.55%	3.29%
18-Nov-22	20,500,403.01	100.977258	18.58%	8.43%	6.59%	4.56%	3.29%
17-Nov-22	20,496,442.38	100.957750	18.56%	8.39%	6.56%	4.56%	3.29%
16-Nov-22	20,492,618.86	100.938917	18.44%	8.33%	6.54%	4.56%	3.29%
15-Nov-22	20,488,806.24	100.920137	18.34%	8.27%	6.53%	4.56%	3.29%
14-Nov-22	20,484,960.18	100.901193	18.25%	8.60%	6.52%	4.56%	3.29%
13-Nov-22	20,481,095.07	100.882155	18.16%	8.53%	6.50%	4.56%	3.29%
12-Nov-22	20,477,307.94	100.863501	18.09%	8.52%	6.49%	4.56%	3.29%
11-Nov-22	20,473,520.66	100.844846	18.00%	8.51%	6.48%	4.59%	3.30%
10-Nov-22	20,467,127.24	100.813355	17.76%	8.42%	6.41%	4.56%	3.29%
9-Nov-22	20,463,362.40	100.794810	17.68%	8.40%	6.40%	4.56%	3.29%
8-Nov-22	20,459,565.86	100.776110	17.60%	8.38%	6.38%	4.57%	3.29%
7-Nov-22	20,455,741.61	100.757273	17.52%	8.36%	6.36%	4.57%	3.29%
6-Nov-22	20,451,910.09	100.738401	17.43%	8.33%	6.35%	4.57%	3.29%
5-Nov-22	20,448,121.82	100.719741	20.31%	8.32%	6.34%	4.57%	3.29%
4-Nov-22	20,444,333.36	100.701080	8.02%	8.31%	6.32%	4.57%	3.30%
3-Nov-22	20,440,555.52	100.682472	7.97%	8.30%	6.30%	4.57%	3.30%
2-Nov-22	20,436,736.79	100.663663	7.93%	8.27%	6.29%	4.56%	3.29%
1-Nov-22	20,434,316.71	100.651742	7.90%	8.29%	6.25%	4.57%	3.30%
31-Oct-22	20,430,440.99	100.632652	7.78%	8.30%	6.20%	4.57%	3.30%
30-Oct-22	20,427,177.79	100.616579	7.68%	8.30%	6.17%	4.57%	3.30%
29-Oct-22	20,423,924.06	100.600552	7.62%	8.28%	6.12%	4.57%	3.30%
28-Oct-22	20,420,670.20	100.584525	7.45%	8.30%	6.06%	4.57%	3.30%
27-Oct-22	20,417,395.14	100.568393	7.33%	8.29%	6.00%	4.57%	3.30%
26-Oct-22	20,414,044.94	100.551891	7.29%	8.26%	5.95%	4.57%	3.30%
25-Oct-22	20,410,382.37	100.533851	7.17%	8.23%	5.89%	4.62%	3.32%
24-Oct-22	20,402,118.39	100.493145	6.76%	8.06%	5.75%	4.53%	3.28%
23-Oct-22	20,403,583.87	100.500364	6.92%	8.17%	5.79%	4.58%	3.30%
22-Oct-22	20,399,980.21	100.482614	6.81%	8.15%	5.73%	4.58%	3.30%
21-Oct-22	20,396,376.38	100.464862	85.14%	8.13%	5.66%	4.58%	3.30%
20-Oct-22	20,392,779.31	100.447145	7.33%	8.11%	5.60%	4.55%	3.29%
19-Oct-22	20,391,959.90	100.443109	7.39%	8.16%	5.60%	4.58%	3.30%
18-Oct-22	20,388,409.41	100.425620	7.33%	8.13%	5.54%	4.56%	3.29%
17-Oct-22	20,386,586.28	100.416640	7.34%	8.16%	5.51%	4.56%	3.30%
16-Oct-22	20,384,570.15	100.406709	7.33%	8.20%	5.46%	4.57%	3.30%
15-Oct-22	20,382,209.79	100.395083	8.06%	8.23%	5.48%	4.57%	3.30%
14-Oct-22	20,379,849.31	100.383456	8.02%	8.25%	5.44%	4.57%	3.30%
13-Oct-22	20,377,400.81	100.371396	8.07%	8.27%	5.40%	4.57%	3.30%

1-Jan-25	24,787,456.03	107.551302	40.70%	33.51%	14.63%	2.98%	2.07%
31-Dec-24	24,782,622.37	107.530329	40.69%	33.53%	14.63%	2.77%	1.96%
30-Dec-24	24,803,255.16	107.619853	42.45%	34.15%	14.99%	6.19%	3.65%
12-Oct-22	20,375,097.19	100.360049	8.15%	8.29%	5.35%	4.57%	3.30%
11-Oct-22	20,372,759.02	100.348532	8.20%	8.31%	5.30%	4.57%	3.30%
10-Oct-22	20,370,355.35	100.336693	8.24%	8.33%	5.27%	4.57%	3.30%
9-Oct-22	20,367,898.09	100.324589	8.27%	8.35%	5.24%	4.57%	3.30%
8-Oct-22	20,365,533.39	100.312942	8.32%	8.36%	5.22%	4.57%	3.30%
7-Oct-22	20,363,168.59	100.301293	8.36%	8.39%	5.16%	5.06%	3.54%
6-Oct-22	15,194,414.03	100.049477	5.50%	6.95%	4.15%	2.56%	3.31%
5-Oct-22	15,344,125.96	101.035274	5.54%	13.03%	4.06%	2.54%	3.28%
4-Oct-22	15,341,949.67	101.020944	5.57%	13.03%	4.01%	4.75%	3.28%
3-Oct-22	15,339,566.74	101.005253	5.55%	13.02%	3.97%	4.74%	3.28%
2-Oct-22	15,338,181.76	100.996133	5.62%	12.99%	3.98%	4.74%	3.28%
1-Oct-22	15,336,827.09	100.987213	5.75%	12.97%	4.03%	4.74%	3.28%
30-Sep-22	15,335,578.63	100.978993	5.85%	12.98%	4.01%	4.74%	3.28%
29-Sep-22	15,333,946.18	100.968244	5.87%	12.94%	3.97%	4.72%	3.27%
28-Sep-22	15,333,603.47	100.965987	6.07%	12.93%	3.92%	4.73%	3.27%
27-Sep-22	15,332,696.64	100.960016	6.17%	12.91%	3.90%	4.75%	3.28%
26-Sep-22	15,330,676.47	100.946714	6.17%	12.84%	3.87%	4.74%	3.28%
25-Sep-22	15,329,497.14	100.938948	6.22%	12.81%	3.85%	4.73%	3.28%
24-Sep-22	15,328,535.60	100.932617	6.31%	12.81%	3.84%	4.73%	3.28%
23-Sep-22	15,327,574.02	100.926285	6.35%	12.79%	3.82%	4.74%	3.28%
22-Sep-22	15,326,220.92	100.917376	6.41%	12.76%	3.79%	16.96%	9.30%
21-Sep-22	15,172,596.85	94.828730	-67.21%	-24.25%	-20.60%	-7.83%	n.a.
20-Sep-22	10,083,988.65	100.839887	5.83%	12.31%	3.48%	4.74%	3.28%
19-Sep-22	10,083,044.18	100.830442	5.87%	12.27%	3.46%	4.75%	3.29%
18-Sep-22	10,081,793.83	100.817938	5.87%	12.21%	3.40%	4.74%	3.28%
17-Sep-22	10,080,883.50	100.808835	5.92%	12.17%	3.43%	4.75%	3.28%
16-Sep-22	10,079,973.14	100.799731	6.01%	12.10%	3.40%	4.87%	3.35%
15-Sep-22	10,072,772.44	100.727724	5.33%	11.76%	3.12%	4.75%	3.28%
14-Sep-22	10,071,934.43	100.719344	5.40%	11.72%	3.10%	4.76%	3.29%
13-Sep-22	10,070,361.52	100.703615	5.41%	11.63%	3.05%	4.77%	3.29%
12-Sep-22	10,068,576.85	100.685769	5.36%	11.53%	3.00%	4.77%	3.29%
11-Sep-22	10,066,974.05	100.669741	5.34%	11.43%	2.98%	4.76%	3.29%
10-Sep-22	10,065,495.90	100.654959	5.35%	11.36%	2.95%	4.76%	3.29%
9-Sep-22	10,064,017.69	100.640177	5.34%	11.31%	2.90%	4.77%	3.29%
8-Sep-22	10,062,504.87	100.625049	5.34%	11.25%	2.85%	4.77%	3.29%
7-Sep-22	10,061,030.10	100.610301	5.35%	11.14%	-0.25%	4.77%	3.30%
6-Sep-22	10,059,459.89	100.594599	5.34%	11.06%	1.07%	4.77%	3.30%
5-Sep-22	10,057,741.47	100.577415	5.31%	3.34%	0.42%	4.77%	3.30%
4-Sep-22	10,056,066.73	100.560667	5.28%	3.25%	-2.57%	4.77%	3.30%
3-Sep-22	10,054,630.36	100.546304	5.28%	3.20%	-2.09%	4.77%	3.30%
2-Sep-22	10,053,193.70	100.531937	5.14%	3.17%	-2.11%	4.78%	3.30%
1-Sep-22	10,051,196.43	100.511964	4.97%	3.19%	-2.15%	4.77%	3.30%
31-Aug-22	10,049,588.02	100.495880	4.89%	3.10%	-3.87%	4.77%	3.30%
30-Aug-22	10,048,338.49	100.483385	4.78%	3.04%	-3.87%	4.78%	3.30%
29-Aug-22	10,046,462.66	100.464627	4.58%	2.86%	-3.91%	4.77%	3.30%
28-Aug-22	10,045,026.25	100.450263	4.42%	2.79%	-2.16%	4.77%	3.30%
27-Aug-22	10,043,776.83	100.437768	4.30%	2.74%	-3.97%	4.77%	3.30%
26-Aug-22	10,042,527.36	100.425274	4.19%	2.68%	-3.99%	4.77%	3.30%
25-Aug-22	10,041,215.12	100.412151	4.10%	2.63%	-4.01%	4.77%	3.30%
24-Aug-22	10,040,202.01	100.402020	4.01%	2.58%	-3.24%	4.77%	3.30%
23-Aug-22	10,038,838.57	100.388386	3.88%	2.51%	-2.52%	4.78%	3.30%
22-Aug-22	10,037,322.30	100.373223	3.72%	2.42%	-2.54%	4.78%	3.30%
21-Aug-22	10,035,914.19	100.359142	3.57%	2.34%	-2.42%	4.77%	3.30%
20-Aug-22	10,034,664.38	100.346644	3.45%	2.28%	-2.57%	4.77%	3.30%
19-Aug-22	10,033,414.52	100.334145	3.34%	2.19%	-2.58%	4.78%	3.30%
18-Aug-22	10,032,067.28	100.320673	3.20%	2.21%	-2.60%	4.78%	3.31%
17-Aug-22	10,030,455.18	100.304552	2.98%	2.13%	-3.09%	4.78%	3.31%
16-Aug-22	10,028,817.74	100.288177	2.97%	2.04%	-3.20%	4.78%	3.30%
15-Aug-22	10,027,395.08	100.273951	2.82%	1.97%	-2.01%	4.78%	3.31%
14-Aug-22	10,025,798.28	100.257983	2.64%	1.90%	-2.65%	4.78%	3.31%
13-Aug-22	10,024,375.50	100.243755	2.49%	1.85%	-3.36%	4.78%	3.31%
12-Aug-22	10,022,952.66	100.229527	2.30%	1.82%	-3.37%	4.79%	3.31%
11-Aug-22	10,021,405.87	100.214059	2.15%	1.78%	-3.38%	4.78%	3.31%
10-Aug-22	10,019,949.69	100.200000	2.05%	1.71%	-2.77%	4.79%	3.31%
9-Aug-22	10,018,534.33	100.185343	1.96%	1.63%	-3.19%	4.79%	3.31%
8-Aug-22	10,017,045.65	100.170000	1.73%	-3.00%	-3.57%	4.79%	3.31%
7-Aug-22	10,015,495.80	100.154958	1.57%	-1.03%	-3.59%	4.79%	3.31%
6-Aug-22	10,014,070.45	100.140705	1.42%	-1.98%	-1.60%	4.79%	3.31%
5-Aug-22	10,012,645.04	100.126450	1.29%	-6.43%	-1.61%	4.79%	3.31%

1-Jan-25	24,787,456.03	107.551302	40.70%	33.51%	14.63%	2.98%	2.07%
31-Dec-24	24,782,622.37	107.530329	40.69%	33.53%	14.63%	2.77%	1.96%
30-Dec-24	24,803,255.16	107.619853	42.45%	34.15%	14.99%	6.19%	3.65%
4-Aug-22	10,011,198.32	100.111983	1.17%	-5.72%	-1.62%	4.77%	3.30%
3-Aug-22	10,010,884.07	100.108841	1.27%	-5.68%	-3.59%	4.77%	3.30%
2-Aug-22	10,010,307.36	100.103074	1.47%	-5.66%	-3.04%	4.78%	3.31%
1-Aug-22	10,009,321.45	100.093215	1.37%	-8.19%	-3.65%	4.77%	3.30%
31-Jul-22	10,008,996.53	100.089965	1.35%	-8.14%	-3.64%	4.76%	3.30%
30-Jul-22	10,008,800.82	100.088008	1.20%	-8.10%	-3.60%	4.76%	3.30%
29-Jul-22	10,008,649.53	100.086495	1.22%	-5.40%	-3.56%	4.77%	3.30%
28-Jul-22	10,008,418.94	100.084189	1.23%	-8.05%	-3.53%	4.77%	3.30%
27-Jul-22	10,008,094.11	100.080941	1.23%	-8.02%	-3.39%	4.77%	3.30%
26-Jul-22	10,007,524.21	100.075242	1.21%	-8.01%	-3.51%	4.77%	3.30%
25-Jul-22	10,007,193.60	100.071936	1.19%	-6.82%	-2.26%	4.77%	3.30%
24-Jul-22	10,006,898.51	100.068985	1.18%	-5.68%	0.31%	4.77%	3.30%
23-Jul-22	10,006,736.72	100.067367	1.17%	-5.62%	0.45%	4.77%	3.30%
22-Jul-22	10,006,572.73	100.065727	1.15%	-5.38%	0.49%	4.77%	3.30%
21-Jul-22	10,006,256.27	100.062563	1.15%	-5.54%	0.53%	4.77%	3.30%
20-Jul-22	10,005,986.49	100.059865	1.09%	-5.51%	0.56%	4.77%	3.30%
19-Jul-22	10,005,716.54	100.057165	1.26%	-5.47%	3.60%	4.76%	3.30%
18-Jul-22	10,005,940.77	100.059408	1.31%	-6.09%	0.96%	4.79%	3.31%
17-Jul-22	10,004,390.93	100.043909	1.15%	-6.25%	0.42%	4.77%	3.30%
16-Jul-22	10,004,224.58	100.042246	1.15%	-4.39%	-0.50%	4.77%	3.30%
15-Jul-22	10,004,058.23	100.040582	1.18%	-5.27%	-0.46%	4.77%	3.30%
14-Jul-22	10,003,917.31	100.039173	1.24%	-6.25%	-0.42%	4.76%	3.30%
13-Jul-22	10,004,051.24	100.040512	1.38%	-6.18%	-0.36%	4.77%	3.30%
12-Jul-22	10,003,704.97	100.037050	1.43%	-6.13%	-1.01%	4.78%	3.30%
11-Jul-22	10,003,118.26	100.031183	1.39%	-5.16%	-1.77%	4.78%	3.31%
10-Jul-22	10,002,460.89	100.024609	1.33%	-5.73%	-2.63%	4.76%	3.30%
9-Jul-22	10,002,790.94	100.027909	-7.69%	-6.20%	-2.61%	4.77%	3.30%
8-Jul-22	10,002,625.92	100.026259	-3.60%	-6.15%	-2.57%	2.24%	3.30%
7-Jul-22	10,127,209.75	101.272098	-5.38%	-3.11%	1.84%	2.21%	3.26%
6-Jul-22	10,126,911.76	101.269118	-14.13%	-3.05%	3.30%	2.21%	3.26%
5-Jul-22	10,126,432.38	101.264324	-12.59%	-3.01%	3.14%	2.22%	3.27%
4-Jul-22	10,125,355.15	101.253552	-12.61%	-6.01%	3.10%	2.25%	3.28%
3-Jul-22	10,123,082.99	101.230830	-12.78%	-5.29%	-0.34%	2.21%	3.26%
2-Jul-22	10,122,923.01	101.229230	-17.73%	-6.15%	-1.19%	2.21%	3.26%
1-Jul-22	10,122,763.02	101.227630	-17.60%	-6.13%	-1.15%	2.18%	3.25%
30-Jun-22	10,123,822.30	101.238223	-17.38%	-6.00%	-1.06%	2.21%	3.26%
29-Jun-22	10,123,538.66	101.235387	-12.01%	-5.94%	-2.38%	2.21%	3.26%
28-Jun-22	10,123,151.37	101.231514	-17.32%	-5.90%	-1.05%	2.21%	3.26%
27-Jun-22	10,122,862.99	101.228630	-17.26%	-5.70%	-2.16%	2.21%	3.26%
26-Jun-22	10,122,472.51	101.224725	-17.21%	-5.87%	-2.14%	2.21%	3.26%
25-Jun-22	10,122,267.36	101.222674	-14.82%	-3.98%	4.31%	2.21%	3.26%
24-Jun-22	10,122,062.21	101.220622	-12.54%	-0.13%	4.35%	2.20%	3.26%
23-Jun-22	10,122,030.38	101.220304	-12.40%	0.09%	4.40%	2.20%	3.26%
22-Jun-22	10,122,042.58	101.220426	-11.89%	0.16%	4.35%	2.21%	3.26%
21-Jun-22	10,121,698.88	101.216989	-12.22%	0.22%	3.60%	2.20%	3.26%
20-Jun-22	10,121,920.03	101.219200	-12.09%	0.30%	3.43%	2.24%	3.28%
19-Jun-22	10,120,262.60	101.202626	-12.19%	4.77%	2.50%	2.21%	3.26%
18-Jun-22	10,120,055.94	101.200559	-13.48%	0.79%	7.22%	2.21%	3.26%
17-Jun-22	10,119,849.27	101.198493	-13.63%	0.06%	7.26%	2.21%	3.26%
16-Jun-22	10,119,694.06	101.196941	-9.92%	-1.33%	7.30%	2.21%	3.27%
15-Jun-22	10,119,238.02	101.192380	-11.71%	-1.28%	7.01%	2.22%	3.27%
14-Jun-22	10,118,637.42	101.186374	-13.73%	-1.25%	5.59%	2.22%	3.27%
13-Jun-22	10,117,616.40	101.176164	-13.71%	-1.23%	4.76%	2.22%	3.27%
12-Jun-22	10,116,795.12	101.167951	-13.67%	-2.23%	2.52%	2.21%	3.26%
11-Jun-22	10,116,588.34	101.165883	-11.70%	-3.34%	1.26%	2.21%	3.26%
10-Jun-22	10,116,381.55	101.163816	-12.79%	-4.60%	1.30%	0.68%	2.51%
9-Jun-22	10,192,214.87	101.922149	-4.75%	-0.07%	4.36%	2.88%	3.58%
8-Jun-22	10,157,680.38	101.576804	-8.73%	-2.06%	6.20%	1.91%	3.11%
7-Jun-22	10,172,149.08	101.721491	-0.84%	5.44%	4.35%	0.72%	2.52%
6-Jun-22	10,245,885.86	102.458859	8.12%	12.07%	8.07%	2.45%	3.35%
5-Jun-22	10,232,330.64	102.323306	6.64%	11.05%	6.78%	2.20%	3.23%
4-Jun-22	10,231,425.92	102.314259	0.59%	11.01%	3.83%	2.20%	3.23%
3-Jun-22	10,230,521.04	102.305210	2.23%	5.87%	3.84%	1.35%	2.81%
2-Jun-22	10,272,608.43	102.726084	5.52%	7.09%	5.55%	2.20%	3.22%
1-Jun-22	10,271,386.84	102.713868	5.42%	7.09%	8.34%	2.19%	3.22%
31-May-22	10,270,564.88	102.705649	5.46%	7.11%	5.51%	3.08%	3.66%
30-May-22	10,224,489.37	102.244894	0.12%	2.39%	7.93%	1.29%	2.79%
29-May-22	10,269,362.43	102.693624	5.60%	7.10%	6.15%	2.19%	3.22%

1-Jan-25	24,787,456.03	107.551302	40.70%	33.51%	14.63%	2.98%	2.07%
31-Dec-24	24,782,622.37	107.530329	40.69%	33.53%	14.63%	2.77%	1.96%
30-Dec-24	24,803,255.16	107.619853	42.45%	34.15%	14.99%	6.19%	3.65%
28-May-22	10,268,529.98	102.685300	5.95%	5.38%	8.80%	2.19%	3.22%
27-May-22	10,267,697.50	102.676975	5.55%	5.38%	8.81%	2.58%	3.41%
26-May-22	10,247,100.34	102.471003	6.94%	13.96%	8.03%	2.57%	3.41%
25-May-22	10,227,451.55	102.274516	12.41%	12.86%	9.77%	2.20%	3.24%
24-May-22	10,226,247.22	102.262472	12.70%	12.86%	9.72%	2.27%	3.27%
23-May-22	10,221,978.92	102.219789	12.34%	12.53%	10.06%	2.13%	3.21%
22-May-22	10,224,356.04	102.243560	12.77%	11.56%	9.56%	2.20%	3.24%
21-May-22	10,223,513.10	102.235131	12.81%	11.23%	9.57%	2.20%	3.24%
20-May-22	10,222,670.13	102.226701	21.94%	9.88%	9.58%	1.97%	3.12%
19-May-22	10,233,443.30	102.334433	15.23%	17.69%	10.06%	2.16%	3.21%
18-May-22	10,234,489.92	102.344899	13.90%	17.83%	10.13%	2.81%	3.53%
17-May-22	10,202,869.16	102.028692	7.32%	15.99%	8.88%	1.89%	3.09%
16-May-22	10,217,553.34	102.175533	9.23%	16.47%	3.95%	1.85%	3.07%
15-May-22	10,234,127.07	102.341271	11.37%	15.35%	10.78%	2.20%	3.24%
14-May-22	10,232,940.77	102.329408	11.37%	14.08%	10.82%	2.20%	3.24%
13-May-22	10,231,754.42	102.317544	9.31%	10.65%	10.81%	2.52%	3.39%
12-May-22	10,214,844.98	102.148450	5.08%	7.75%	10.18%	2.01%	3.14%
11-May-22	10,223,826.42	102.238264	3.62%	8.36%	10.55%	2.02%	3.15%
10-May-22	10,232,129.94	102.321299	4.62%	8.93%	10.93%	2.20%	3.24%
9-May-22	10,231,081.93	102.310819	4.64%	13.72%	10.91%	3.21%	3.73%
8-May-22	10,179,180.42	101.791804	-1.41%	6.95%	6.04%	2.22%	3.25%
7-May-22	10,177,984.62	101.779846	16.00%	8.04%	2.77%	2.22%	3.25%
6-May-22	10,176,788.77	101.767888	15.45%	6.84%	2.76%	1.20%	2.75%
5-May-22	10,226,460.90	102.264609	21.42%	5.46%	4.77%	2.47%	3.37%
4-May-22	10,211,845.54	102.118455	9.52%	4.65%	4.18%	1.90%	3.09%
3-May-22	10,226,248.93	102.262489	8.68%	5.58%	4.84%	2.19%	3.23%
2-May-22	10,225,833.00	102.258330	8.78%	9.78%	4.87%	2.20%	3.24%
1-May-22	10,224,638.16	102.246382	8.78%	5.54%	4.63%	2.21%	3.24%
30-Apr-22	10,223,443.25	102.234433	4.66%	11.84%	4.66%	2.20%	3.24%
29-Apr-22	10,222,296.27	102.222963	8.62%	6.42%	4.65%	2.26%	3.27%
28-Apr-22	10,218,529.78	102.185298	4.85%	10.20%	4.54%	2.13%	3.20%
27-Apr-22	10,221,067.02	102.210670	5.25%	10.42%	4.71%	2.82%	3.54%
26-Apr-22	10,188,957.00	101.889570	20.94%	8.56%	3.66%	3.48%	3.87%
25-Apr-22	10,124,221.95	101.242220	13.31%	8.43%	1.13%	2.28%	3.30%
24-Apr-22	10,120,567.57	101.205676	13.01%	8.21%	0.98%	2.23%	3.27%
23-Apr-22	10,119,344.02	101.193440	12.72%	8.89%	0.97%	2.23%	3.27%
22-Apr-22	10,118,120.42	101.181204	10.38%	7.94%	0.96%	2.23%	3.27%
21-Apr-22	10,116,966.52	101.169665	9.69%	7.94%	0.95%	3.72%	4.01%
20-Apr-22	10,041,582.65	100.415827	-1.90%	3.46%	-2.01%	0.90%	2.64%
19-Apr-22	10,106,951.28	101.069513	20.06%	7.46%	3.59%	1.97%	3.15%
18-Apr-22	10,118,918.53	101.189185	21.66%	8.23%	4.14%	1.75%	3.03%
17-Apr-22	10,141,836.05	101.418361	24.58%	9.64%	5.09%	2.22%	3.27%
16-Apr-22	10,140,613.41	101.406134	23.63%	1.34%	4.72%	2.22%	3.27%
15-Apr-22	10,139,390.72	101.393907	19.27%	10.45%	4.70%	2.22%	3.27%
14-Apr-22	10,138,167.98	101.381680	16.76%	10.51%	4.69%	4.08%	3.10%
13-Apr-22	10,154,026.21	101.540262	12.00%	11.53%	0.32%	4.03%	3.07%
12-Apr-22	10,172,410.16	101.724102	10.44%	12.70%	0.28%	3.96%	3.04%
11-Apr-22	10,193,519.31	101.935193	13.10%	14.00%	-0.04%	4.38%	3.24%
10-Apr-22	10,193,398.34	101.933983	13.23%	14.06%	-0.03%	4.40%	3.25%
9-Apr-22	10,192,175.91	101.921759	22.75%	14.01%	-0.04%	4.40%	3.25%
8-Apr-22	10,190,953.43	101.909534	15.30%	9.77%	-0.05%	5.10%	3.60%
7-Apr-22	10,154,409.51	101.544095	0.07%	-3.80%	-5.72%	2.13%	2.03%
6-Apr-22	10,157,772.52	101.577725	-1.74%	-3.54%	-5.56%	2.20%	2.07%
5-Apr-22	10,157,595.22	101.575952	-10.33%	-3.49%	-5.72%	0.52%	1.24%
4-Apr-22	10,241,667.51	102.416675	-0.22%	1.49%	1.94%	1.76%	1.84%
3-Apr-22	10,263,020.98	102.630210	2.45%	2.90%	2.73%	2.20%	2.06%
2-Apr-22	10,261,801.47	102.618015	10.72%	2.89%	3.15%	2.20%	2.06%
1-Apr-22	10,260,581.91	102.605819	2.29%	2.54%	3.14%	1.51%	1.72%
31-Mar-22	10,293,987.17	102.939872	18.94%	4.64%	4.49%	2.84%	2.37%
30-Mar-22	10,259,647.74	102.596477	4.20%	2.65%	-1.38%	1.62%	1.77%
29-Mar-22	10,287,544.88	102.875449	15.50%	4.36%	5.89%	2.19%	2.05%
28-Mar-22	10,286,660.60	102.866606	15.52%	4.41%	2.59%	5.36%	3.62%
27-Mar-22	10,124,681.97	101.246820	-3.75%	-4.90%	-8.16%	2.23%	2.09%
26-Mar-22	10,123,501.84	101.235018	3.51%	-4.90%	-5.31%	2.23%	2.09%
25-Mar-22	10,122,321.67	101.223217	3.37%	-4.98%	-5.32%	2.18%	2.06%
24-Mar-22	10,123,486.13	101.234861	5.01%	-4.85%	-5.25%	1.84%	1.90%
23-Mar-22	10,141,614.32	101.416143	5.46%	-3.72%	-7.32%	2.11%	2.03%
22-Mar-22	10,146,143.42	101.461434	6.14%	-3.40%	0.34%	1.77%	1.86%

1-Jan-25	24,787,456.03	107.551302	40.70%	33.51%	14.63%	2.98%	2.07%
31-Dec-24	24,782,622.37	107.530329	40.69%	33.53%	14.63%	2.77%	1.96%
30-Dec-24	24,803,255.16	107.619853	42.45%	34.15%	14.99%	6.19%	3.65%
21-Mar-22	10,167,482.78	101.674828	8.84%	-2.07%	1.23%	4.51%	3.21%
20-Mar-22	10,051,195.13	100.511951	-5.05%	-4.57%	-3.39%	2.24%	2.10%
19-Mar-22	10,050,000.15	100.500002	-5.11%	-4.54%	-3.42%	2.24%	2.10%
18-Mar-22	10,048,805.12	100.488051	-5.20%	-4.56%	-3.42%	2.09%	2.02%
17-Mar-22	10,055,350.74	100.553507	-20.54%	-4.64%	-3.12%	1.53%	1.75%
16-Mar-22	10,089,613.45	100.896135	1.61%	-2.54%	-1.71%	1.82%	1.89%
15-Mar-22	10,108,948.83	101.089488	4.20%	-1.32%	1.80%	1.11%	1.54%
14-Mar-22	10,163,761.20	101.637612	10.94%	-5.47%	4.80%	1.57%	1.76%
13-Mar-22	10,194,937.33	101.949373	14.83%	-4.76%	0.31%	2.21%	2.07%
12-Mar-22	10,193,749.00	101.937490	14.73%	-6.55%	-0.80%	2.21%	2.07%
11-Mar-22	10,192,560.62	101.925606	14.72%	-6.58%	-0.81%	3.77%	2.84%
10-Mar-22	10,113,045.58	101.130456	5.17%	-11.22%	-3.89%	1.00%	1.48%
9-Mar-22	10,173,008.46	101.730085	4.18%	-7.63%	-0.08%	2.57%	2.25%
8-Mar-22	10,153,849.93	101.538499	-7.68%	-8.62%	0.15%	1.83%	1.89%
7-Mar-22	10,172,353.93	101.723539	-5.35%	-7.48%	0.97%	0.75%	1.35%
6-Mar-22	10,244,572.58	102.445726	3.37%	-3.44%	5.24%	2.20%	2.06%
5-Mar-22	10,243,477.67	102.434777	3.20%	3.01%	0.73%	2.20%	2.06%
4-Mar-22	10,242,376.71	102.423767	3.34%	2.88%	0.73%	3.57%	2.74%
3-Mar-22	10,172,215.42	101.722154	-4.88%	-0.56%	-1.98%	0.82%	1.39%
2-Mar-22	10,241,329.21	102.413292	2.79%	3.57%	0.31%	4.26%	3.08%
1-Mar-22	10,136,187.90	101.361879	-9.50%	-2.59%	-3.75%	0.44%	1.20%
28-Feb-22	10,224,321.08	102.243211	1.09%	-4.13%	-0.29%	3.49%	2.70%
27-Feb-22	10,158,124.82	101.581248	-6.69%	1.16%	-2.33%	2.22%	2.08%
26-Feb-22	10,157,072.17	101.570722	-6.61%	-3.75%	-2.67%	2.22%	2.08%
25-Feb-22	10,156,019.48	101.560195	-6.06%	-10.41%	-2.67%	3.43%	2.67%
24-Feb-22	10,094,358.72	100.943587	-13.28%	-9.67%	-5.05%	2.21%	2.08%
23-Feb-22	10,094,377.48	100.943775	-13.28%	-9.62%	-5.41%	2.46%	2.20%
22-Feb-22	10,081,980.67	100.819807	-14.65%	-10.30%	-4.74%	1.92%	1.94%
21-Feb-22	10,096,318.83	100.963188	-12.84%	-13.62%	-5.06%	2.23%	2.09%
20-Feb-22	10,095,236.73	100.952367	-12.86%	-2.51%	-5.16%	2.23%	2.09%
19-Feb-22	10,094,178.82	100.941788	-12.89%	-2.51%	-4.92%	2.23%	2.09%
18-Feb-22	10,093,120.87	100.931209	-4.11%	-2.60%	-4.92%	2.23%	2.09%
17-Feb-22	10,092,364.02	100.923640	-3.98%	-2.61%	-4.91%	2.22%	2.09%
16-Feb-22	10,091,922.29	100.919223	-3.94%	-2.57%	-4.97%	-0.53%	0.73%
15-Feb-22	10,228,053.70	102.280537	11.45%	5.57%	-0.01%	5.19%	3.54%
14-Feb-22	10,076,303.27	100.763033	-6.67%	-3.36%	-5.09%	2.26%	2.11%
13-Feb-22	10,074,180.06	100.741801	-6.82%	0.62%	-5.42%	2.23%	2.09%
12-Feb-22	10,073,155.97	100.731560	-21.68%	1.77%	-6.15%	2.23%	2.09%
11-Feb-22	10,072,131.83	100.721318	-24.06%	-6.79%	-6.15%	2.22%	2.09%
10-Feb-22	10,071,772.51	100.717725	-27.50%	-8.39%	-6.12%	2.24%	2.10%
9-Feb-22	10,070,705.23	100.707052	-27.56%	-8.39%	-6.97%	2.22%	2.09%
8-Feb-22	10,070,215.19	100.702152	-27.51%	-8.36%	-7.01%	0.85%	1.41%
7-Feb-22	10,138,197.42	101.381974	-19.37%	-2.17%	-4.48%	0.60%	1.28%
6-Feb-22	10,218,316.18	102.183162	-9.62%	4.05%	-2.67%	2.20%	2.07%
5-Feb-22	10,217,298.13	102.172981	-9.64%	4.12%	-0.05%	2.20%	2.07%
4-Feb-22	10,216,280.04	102.162800	-10.22%	6.17%	-0.05%	2.18%	2.05%
3-Feb-22	10,216,615.83	102.166158	2.86%	-0.48%	0.01%	2.23%	2.08%
2-Feb-22	10,214,325.18	102.143252	2.45%	-0.55%	2.74%	2.21%	2.07%
1-Feb-22	10,213,207.36	102.132074	3.72%	-0.56%	2.90%	2.09%	2.01%
31-Jan-22	10,217,899.65	102.178997	4.37%	-0.92%	0.59%	2.22%	2.07%
30-Jan-22	10,215,989.48	102.159895	4.25%	-0.92%	0.56%	2.20%	2.06%
29-Jan-22	10,215,132.00	102.151320	-9.33%	-0.98%	0.31%	2.20%	2.06%
28-Jan-22	10,214,274.48	102.142745	8.98%	-0.19%	0.31%	2.22%	2.07%
27-Jan-22	10,212,579.52	102.125795	-0.96%	-0.74%	0.27%	2.30%	2.11%
26-Jan-22	10,206,898.39	102.068984	-14.90%	-1.01%	-0.85%	2.21%	2.07%
25-Jan-22	10,205,722.42	102.057224	-6.28%	-1.01%	-1.96%	2.18%	2.06%
24-Jan-22	10,205,798.19	102.057982	-6.17%	-1.56%	-3.13%	2.20%	2.07%
23-Jan-22	10,204,820.78	102.048208	-6.19%	0.13%	0.90%	2.20%	2.07%
22-Jan-22	10,203,968.98	102.039690	-14.69%	-1.25%	0.94%	2.20%	2.07%
21-Jan-22	10,203,117.15	102.031172	7.78%	-1.40%	0.94%	2.20%	2.07%
20-Jan-22	10,202,265.28	102.022653	7.81%	-1.02%	0.94%	3.68%	2.79%
19-Jan-22	10,127,350.96	101.273510	-1.13%	-5.36%	-1.95%	2.24%	2.09%
18-Jan-22	10,125,508.69	101.255087	-1.28%	-5.41%	-1.38%	2.22%	2.08%
17-Jan-22	10,124,686.99	101.246870	-1.26%	-5.53%	-1.38%	2.04%	1.99%
16-Jan-22	10,132,704.64	101.327046	-0.18%	-5.62%	-3.10%	2.22%	2.08%
15-Jan-22	10,131,849.83	101.318498	-0.13%	-4.37%	-0.51%	2.22%	2.08%
14-Jan-22	10,130,994.98	101.309950	8.03%	-4.78%	-0.51%	-0.30%	0.84%
13-Jan-22	10,255,925.73	102.559257	25.44%	1.53%	4.46%	1.79%	1.86%
12-Jan-22	10,275,295.84	102.752958	10.43%	2.74%	3.28%	1.59%	1.76%

1-Jan-25	24,787,456.03	107.551302	40.70%	33.51%	14.63%	2.98%	2.07%
31-Dec-24	24,782,622.37	107.530329	40.69%	33.53%	14.63%	2.77%	1.96%
30-Dec-24	24,803,255.16	107.619853	42.45%	34.15%	14.99%	6.19%	3.65%
11-Jan-22	10,304,649.52	103.046495	10.67%	4.53%	5.26%	2.18%	2.04%
10-Jan-22	10,304,086.35	103.040864	10.72%	3.25%	5.24%	2.18%	2.05%
9-Jan-22	10,303,143.41	103.031434	10.74%	3.16%	5.26%	2.18%	2.05%
8-Jan-22	10,302,200.43	103.022004	15.05%	2.90%	5.28%	2.21%	2.06%
7-Jan-22	10,299,717.56	102.997176	17.75%	0.76%	5.22%	2.18%	2.05%
6-Jan-22	10,298,936.42	102.989364	17.92%	4.74%	5.22%	2.09%	2.00%
5-Jan-22	10,302,839.99	103.028400	22.64%	5.03%	5.41%	2.17%	3.11%
4-Jan-22	10,302,427.37	103.024274	-3.81%	-1.41%	-3.16%	2.14%	2.03%
3-Jan-22	10,303,568.68	103.035687	-3.55%	2.88%	-3.06%	2.40%	2.15%
2-Jan-22	10,291,754.20	102.917542	-4.82%	2.49%	-3.55%	2.18%	2.05%
1-Jan-22	10,290,905.97	102.909060	-6.19%	-1.30%	-3.55%	2.18%	2.05%
31-Dec-21	10,290,057.69	102.900577	-6.08%	-1.29%	-3.54%	-0.10%	0.92%
30-Dec-21	10,404,950.23	104.049502	7.44%	5.16%	0.95%	5.19%	3.52%
29-Dec-21	10,248,594.80	102.485948	-9.30%	-4.00%	-5.16%	0.55%	1.25%
28-Dec-21	10,330,758.28	103.307583	-0.51%	0.89%	-2.13%	-0.08%	0.93%
27-Dec-21	10,444,826.03	104.448260	13.05%	6.26%	2.24%	3.60%	2.73%
26-Dec-21	10,369,268.88	103.692689	4.28%	0.20%	-3.53%	2.17%	2.03%
25-Dec-21	10,368,419.53	103.684195	3.06%	-1.62%	3.82%	2.17%	2.03%
24-Dec-21	10,367,570.15	103.675702	6.49%	4.47%	3.84%	0.73%	1.33%
23-Dec-21	10,440,041.57	104.400416	12.33%	8.86%	6.72%	5.88%	3.86%
22-Dec-21	10,247,560.08	102.475601	-10.51%	-2.47%	-0.76%	2.20%	2.06%
21-Dec-21	10,246,523.98	102.465240	-9.78%	-2.48%	-4.80%	2.17%	2.05%
20-Dec-21	10,246,832.92	102.468329	-9.61%	-2.36%	-4.93%	2.19%	2.05%
19-Dec-21	10,246,303.57	102.463036	-9.55%	-1.42%	-4.13%	2.20%	2.06%
18-Dec-21	10,245,261.72	102.452617	-9.82%	-1.44%	-4.10%	2.20%	2.06%
17-Dec-21	10,244,219.83	102.442198	-11.07%	-4.56%	-4.09%	2.20%	2.06%
16-Dec-21	10,242,909.40	102.429094	-8.61%	-0.71%	-4.10%	3.55%	2.72%
15-Dec-21	10,173,838.36	101.738384	-17.48%	-4.75%	-4.43%	2.60%	2.26%
14-Dec-21	10,153,595.46	101.535955	-21.92%	-5.90%	-5.54%	-0.67%	0.66%
13-Dec-21	10,297,041.40	102.970414	-4.91%	-0.30%	0.39%	1.63%	1.78%
12-Dec-21	10,324,131.91	103.241319	-1.60%	2.54%	1.32%	2.18%	2.04%
11-Dec-21	10,323,092.02	103.230920	-4.18%	2.47%	-1.70%	2.18%	2.04%
10-Dec-21	10,322,052.09	103.220521	-4.37%	2.49%	-1.69%	2.89%	2.39%
9-Dec-21	10,284,960.10	102.849601	-9.13%	0.39%	-3.08%	2.66%	2.28%
8-Dec-21	10,259,996.93	102.599969	-15.99%	-1.03%	-4.61%	2.22%	2.07%
7-Dec-21	10,257,892.28	102.578923	-8.32%	-1.11%	-4.08%	2.87%	2.39%
6-Dec-21	10,222,611.86	102.226119	-12.35%	3.37%	-5.42%	-0.04%	0.96%
5-Dec-21	10,334,808.61	103.348086	1.00%	-2.86%	10.35%	2.18%	2.04%
4-Dec-21	10,333,733.96	103.337340	9.34%	-2.85%	0.46%	2.18%	2.04%
3-Dec-21	10,332,663.26	103.326633	9.83%	-2.96%	0.47%	1.95%	1.93%
2-Dec-21	10,343,497.86	103.434979	3.60%	-2.27%	0.94%	2.19%	2.05%
1-Dec-21	10,341,699.32	103.416993	3.52%	-2.31%	0.57%	2.16%	2.03%
30-Nov-21	10,341,737.27	103.417373	2.87%	-2.24%	4.04%	2.44%	2.17%
29-Nov-21	10,327,545.69	103.275457	1.30%	-3.17%	9.50%	2.01%	1.96%
28-Nov-21	10,335,101.65	103.351017	2.29%	-2.94%	3.96%	2.18%	2.04%
27-Nov-21	10,334,007.31	103.340073	-0.53%	-3.07%	4.02%	2.18%	2.04%
26-Nov-21	10,332,912.92	103.329129	-3.86%	-7.39%	4.03%	1.97%	1.94%
25-Nov-21	10,342,393.12	103.423931	-6.29%	4.21%	4.44%	2.74%	2.32%
24-Nov-21	10,312,591.32	103.125913	2.45%	2.53%	3.44%	1.72%	1.82%
23-Nov-21	10,335,275.94	103.352759	5.33%	3.93%	3.95%	2.13%	2.02%
22-Nov-21	10,336,826.99	103.368270	5.62%	4.09%	4.47%	2.30%	2.10%
21-Nov-21	10,329,521.00	103.295210	4.86%	-2.38%	2.67%	2.18%	2.04%
20-Nov-21	10,328,426.43	103.284264	4.92%	-2.66%	2.84%	2.18%	2.04%
19-Nov-21	10,327,331.81	103.273318	6.75%	-1.48%	2.85%	2.13%	2.02%
18-Nov-21	10,328,617.18	103.286172	6.99%	-1.30%	2.94%	1.97%	n.a.
17-Nov-21	10,338,249.16	103.382492	1.97%	-0.67%	3.38%	2.60%	n.a.
16-Nov-21	10,315,885.13	103.158851	7.24%	-1.90%	2.61%	2.04%	n.a.
15-Nov-21	10,322,131.57	103.221316	8.09%	2.04%	0.15%	1.81%	n.a.
14-Nov-21	10,339,895.45	103.398955	10.30%	2.58%	0.93%	2.18%	n.a.
13-Nov-21	10,338,801.31	103.388013	4.34%	3.03%	0.94%	3.79%	n.a.
12-Nov-21	10,337,707.12	103.377071	6.69%	2.77%	0.94%	3.35%	n.a.
11-Nov-21	10,358,714.75	103.587148	9.16%	-0.48%	1.80%	3.75%	n.a.
10-Nov-21	10,359,293.99	103.592940	9.40%	-0.37%	9.05%	3.69%	n.a.
9-Nov-21	10,362,758.19	103.627582	10.00%	-0.10%	9.15%	3.09%	n.a.
8-Nov-21	10,396,658.48	103.966585	14.11%	1.01%	3.37%	5.07%	n.a.
7-Nov-21	10,328,538.95	103.285390	6.15%	-2.02%	0.44%	3.79%	n.a.
6-Nov-21	10,327,444.35	103.274444	6.13%	-2.05%	0.13%	3.79%	n.a.
5-Nov-21	10,326,349.70	103.263497	21.51%	15.02%	0.14%	5.17%	n.a.
4-Nov-21	10,255,044.54	102.550445	13.68%	-3.90%	-2.59%	3.90%	n.a.

1-Jan-25	24,787,456.03	107.551302	40.70%	33.51%	14.63%	2.98%	2.07%
31-Dec-24	24,782,622.37	107.530329	40.69%	33.53%	14.63%	2.77%	1.96%
30-Dec-24	24,803,255.16	107.619853	42.45%	34.15%	14.99%	6.19%	3.65%
3-Nov-21	10,249,827.64	102.498276	5.52%	-4.13%	2.36%	2.55%	n.a.
2-Nov-21	10,313,017.02	103.130170	13.12%	-0.37%	5.51%	3.80%	n.a.
1-Nov-21	10,311,847.91	103.118479	12.32%	-0.88%	5.91%	3.67%	n.a.
31-Oct-21	10,317,361.89	103.173619	-7.31%	4.62%	8.78%	3.79%	n.a.
30-Oct-21	10,316,506.44	103.165064	-7.61%	13.59%	7.47%	3.79%	n.a.
29-Oct-21	10,315,651.19	103.156512	-8.13%	4.80%	7.48%	3.32%	n.a.
28-Oct-21	10,338,519.78	103.385198	-5.61%	6.30%	8.42%	3.23%	n.a.
27-Oct-21	10,365,798.36	103.657984	-11.00%	7.97%	6.54%	3.16%	n.a.
26-Oct-21	10,396,110.85	103.961109	14.72%	9.82%	7.15%	5.78%	n.a.
25-Oct-21	10,291,883.34	102.918833	2.64%	3.94%	4.62%	3.82%	n.a.
24-Oct-21	10,290,156.75	102.901568	2.58%	3.27%	2.42%	3.80%	n.a.
23-Oct-21	10,289,290.77	102.892908	2.62%	3.90%	-0.55%	3.80%	n.a.
22-Oct-21	10,288,424.75	102.884248	-9.54%	1.60%	-0.54%	3.82%	n.a.
21-Oct-21	10,286,789.04	102.867890	-10.16%	1.82%	-0.56%	4.11%	n.a.
20-Oct-21	10,270,356.24	102.703562	-9.58%	0.93%	-2.26%	3.80%	n.a.
19-Oct-21	10,269,648.93	102.696489	-9.45%	0.95%	-1.10%	2.77%	n.a.
18-Oct-21	10,321,537.06	103.215371	-3.28%	4.09%	1.81%	5.08%	n.a.
17-Oct-21	10,254,851.96	102.548520	-10.90%	0.33%	-1.51%	3.81%	n.a.
16-Oct-21	10,253,969.51	102.539695	-3.90%	-3.75%	-1.27%	3.81%	n.a.
15-Oct-21	10,253,087.02	102.530870	-5.00%	-3.66%	-1.25%	2.83%	n.a.
14-Oct-21	10,302,065.96	103.020660	1.76%	-0.74%	0.70%	4.19%	n.a.
13-Oct-21	10,281,212.61	102.812126	-1.06%	-1.89%	-0.50%	3.79%	n.a.
12-Oct-21	10,281,287.48	102.812875	-9.95%	-1.81%	-0.59%	3.81%	n.a.
11-Oct-21	10,279,901.52	102.799015	-9.96%	8.85%	-0.57%	3.82%	n.a.
10-Oct-21	10,278,289.72	102.782897	-10.01%	8.71%	-0.58%	3.80%	n.a.
9-Oct-21	10,277,428.30	102.774283	-11.80%	-1.90%	3.25%	3.81%	n.a.
8-Oct-21	10,276,566.85	102.765669	-10.08%	-2.37%	3.27%	3.81%	n.a.
7-Oct-21	10,275,688.93	102.756889	-10.11%	-2.82%	3.29%	-0.52%	n.a.
6-Oct-21	10,494,200.21	104.942002	36.95%	3.58%	6.34%	1.61%	n.a.
5-Oct-21	10,492,836.12	104.928361	7.10%	3.57%	5.97%	1.57%	n.a.
4-Oct-21	10,493,658.17	104.936582	7.35%	11.44%	3.18%	1.60%	n.a.
3-Oct-21	10,492,674.99	104.926750	7.38%	12.39%	6.02%	1.61%	n.a.
2-Oct-21	10,491,518.87	104.915189	6.37%	12.99%	7.90%	1.61%	n.a.
1-Oct-21	10,490,362.70	104.903627	16.65%	16.92%	7.91%	1.55%	n.a.
30-Sep-21	10,492,155.82	104.921558	35.00%	15.10%	8.04%	1.51%	n.a.
29-Sep-21	10,495,769.28	104.957693	17.85%	15.39%	6.88%	1.56%	n.a.
28-Sep-21	10,496,940.72	104.969407	18.30%	15.51%	8.41%	0.15%	n.a.
27-Sep-21	10,571,407.44	105.714074	27.19%	15.46%	9.36%	5.23%	n.a.
26-Sep-21	10,380,536.65	103.805367	4.87%	3.32%	4.02%	1.63%	n.a.
25-Sep-21	10,379,349.28	103.793493	5.22%	5.60%	0.59%	1.63%	n.a.
24-Sep-21	10,378,161.85	103.781619	3.95%	2.33%	0.58%	1.63%	n.a.
23-Sep-21	10,376,974.37	103.769744	5.18%	-2.13%	0.57%	-0.42%	n.a.
22-Sep-21	10,480,591.34	104.805913	12.84%	3.99%	3.17%	1.51%	n.a.
21-Sep-21	10,484,344.12	104.843441	13.92%	4.27%	3.32%	2.00%	n.a.
20-Sep-21	10,462,722.64	104.627226	11.52%	1.40%	-0.22%	1.62%	n.a.
19-Sep-21	10,460,926.99	104.609270	11.45%	3.10%	-0.29%	1.61%	n.a.
18-Sep-21	10,459,743.59	104.597436	11.49%	4.37%	0.89%	1.61%	n.a.
17-Sep-21	10,458,560.14	104.585601	11.66%	3.21%	0.88%	2.78%	n.a.
16-Sep-21	10,397,300.70	103.973007	-3.61%	0.05%	-1.45%	1.43%	n.a.
15-Sep-21	10,405,819.70	104.058197	-2.34%	0.62%	-1.46%	1.77%	n.a.
14-Sep-21	10,397,011.03	103.970110	-3.23%	0.17%	3.27%	1.53%	n.a.
13-Sep-21	10,400,316.07	104.003161	-2.71%	-0.22%	-2.52%	0.10%	n.a.
12-Sep-21	10,476,948.94	104.769489	6.37%	4.12%	8.74%	1.61%	n.a.
11-Sep-21	10,475,700.28	104.757003	27.90%	4.15%	0.33%	1.61%	n.a.
10-Sep-21	10,474,451.57	104.744516	27.66%	4.17%	0.32%	1.30%	n.a.
9-Sep-21	10,489,201.17	104.892012	8.08%	10.89%	0.92%	1.89%	n.a.
8-Sep-21	10,473,343.19	104.733432	5.38%	10.03%	1.70%	1.60%	n.a.
7-Sep-21	10,472,679.67	104.726797	4.51%	10.07%	-0.77%	7.16%	n.a.
6-Sep-21	10,184,905.45	101.849055	-28.91%	-8.53%	-10.48%	-3.29%	n.a.
5-Sep-21	10,431,925.17	104.319252	0.03%	5.41%	2.46%	1.62%	n.a.
4-Sep-21	10,430,674.63	104.306746	15.44%	1.12%	2.55%	1.62%	n.a.
3-Sep-21	10,429,424.04	104.294240	17.29%	5.35%	2.53%	1.45%	n.a.
2-Sep-21	10,436,907.06	104.369071	19.50%	8.66%	2.85%	3.31%	n.a.
1-Sep-21	10,348,712.87	103.487129	16.95%	3.57%	-2.02%	4.55%	n.a.
31-Aug-21	10,198,737.44	101.987374	-4.67%	-5.13%	-7.78%	-1.26%	n.a.
30-Aug-21	10,343,993.37	103.439934	12.73%	1.45%	-1.01%	1.66%	n.a.
29-Aug-21	10,341,386.13	103.413861	12.54%	3.50%	4.34%	1.63%	n.a.
28-Aug-21	10,340,287.59	103.402876	3.64%	0.57%	-1.23%	1.63%	n.a.
27-Aug-21	10,339,189.00	103.391890	1.77%	3.61%	-1.24%	1.69%	n.a.

1-Jan-25	24,787,456.03	107.551302	40.70%	33.51%	14.63%	2.98%	2.07%
31-Dec-24	24,782,622.37	107.530329	40.69%	33.53%	14.63%	2.77%	1.96%
30-Dec-24	24,803,255.16	107.619853	42.45%	34.15%	14.99%	6.19%	3.65%
26-Aug-21	10,335,006.43	103.350064	5.95%	-1.69%	-1.37%	1.42%	n.a.
25-Aug-21	10,344,538.48	103.445385	0.71%	-1.09%	-2.70%	1.83%	n.a.
24-Aug-21	10,332,977.50	103.329775	-9.40%	-1.71%	-3.23%	0.86%	n.a.
23-Aug-21	10,371,164.45	103.711645	-4.81%	-1.58%	-1.27%	1.71%	n.a.
22-Aug-21	10,365,737.89	103.657379	-5.31%	-1.90%	-2.75%	1.63%	n.a.
21-Aug-21	10,364,560.25	103.645603	-8.64%	-5.98%	-3.07%	1.63%	n.a.
20-Aug-21	10,363,382.56	103.633826	-5.20%	-6.04%	-3.05%	1.63%	n.a.
19-Aug-21	10,361,882.90	103.618829	-2.73%	-4.31%	-3.24%	1.66%	n.a.
18-Aug-21	10,359,288.18	103.592882	-5.18%	-4.41%	-1.57%	0.25%	n.a.
17-Aug-21	10,428,261.40	104.282614	3.73%	-0.38%	1.18%	1.64%	n.a.
16-Aug-21	10,425,874.39	104.258744	3.58%	-1.03%	1.54%	1.62%	n.a.
15-Aug-21	10,424,699.28	104.246993	3.58%	6.52%	1.50%	1.62%	n.a.
14-Aug-21	10,423,524.13	104.235241	2.27%	-2.45%	1.48%	1.62%	n.a.
13-Aug-21	10,422,348.93	104.223489	1.86%	9.90%	1.47%	5.13%	n.a.
12-Aug-21	10,240,871.27	102.408713	-19.15%	-13.02%	-3.82%	1.61%	n.a.
11-Aug-21	10,241,644.60	102.416446	-18.88%	-12.93%	-2.84%	-1.91%	n.a.
10-Aug-21	10,420,013.64	104.200136	13.61%	-2.61%	4.11%	1.46%	n.a.
9-Aug-21	10,427,229.66	104.272297	14.61%	-0.12%	5.63%	1.46%	n.a.
8-Aug-21	10,433,981.42	104.339814	27.38%	-3.37%	6.37%	1.62%	n.a.
7-Aug-21	10,432,806.66	104.328067	11.86%	-1.43%	5.38%	1.62%	n.a.
6-Aug-21	10,431,631.85	104.316319	10.78%	3.68%	5.37%	4.15%	n.a.
5-Aug-21	10,299,969.93	102.999699	-12.88%	-3.78%	0.27%	1.94%	n.a.
4-Aug-21	10,283,282.72	102.832827	-6.34%	-4.70%	0.99%	1.83%	n.a.
3-Aug-21	10,272,239.94	102.722399	-1.97%	-5.29%	1.90%	2.92%	n.a.
2-Aug-21	10,206,513.76	102.065138	-9.51%	-11.26%	-4.63%	1.00%	n.a.
1-Aug-21	10,238,039.40	102.380394	-5.66%	-9.39%	-0.45%	1.65%	n.a.
31-Jul-21	10,236,856.39	102.368564	-9.61%	-7.74%	-6.75%	1.64%	n.a.
30-Jul-21	10,235,920.95	102.359210	-5.35%	0.30%	-6.75%	0.17%	n.a.
29-Jul-21	10,309,437.32	103.094373	-2.46%	-3.63%	-3.88%	1.32%	n.a.
28-Jul-21	10,324,203.31	103.242033	5.46%	-2.73%	4.81%	2.39%	n.a.
27-Jul-21	10,284,732.54	102.847325	-9.22%	-4.97%	-1.72%	0.56%	n.a.
26-Jul-21	10,338,508.13	103.385081	-2.87%	-4.40%	-1.75%	0.14%	n.a.
25-Jul-21	10,413,417.68	104.134177	5.94%	-0.20%	7.50%	1.62%	n.a.
24-Jul-21	10,412,311.06	104.123111	1.61%	0.48%	8.49%	1.62%	n.a.
23-Jul-21	10,411,203.42	104.112034	1.48%	-1.50%	8.48%	1.06%	n.a.
22-Jul-21	10,438,647.23	104.386472	-3.42%	-0.34%	9.60%	2.19%	n.a.
21-Jul-21	10,407,898.71	104.078987	-6.96%	-2.01%	4.81%	2.04%	n.a.
20-Jul-21	10,385,192.31	103.851923	-5.93%	-3.51%	3.44%	1.24%	n.a.
19-Jul-21	10,403,578.54	104.035785	-3.71%	0.22%	-0.93%	1.74%	n.a.
18-Jul-21	10,396,398.43	103.963984	-4.44%	-0.07%	3.70%	1.62%	n.a.
17-Jul-21	10,395,245.46	103.952455	-5.60%	0.53%	3.56%	1.62%	n.a.
16-Jul-21	10,394,092.45	103.940925	9.46%	0.47%	3.55%	1.40%	n.a.
15-Jul-21	10,404,084.28	104.040843	-7.13%	1.10%	3.97%	1.55%	n.a.
14-Jul-21	10,406,477.27	104.064773	17.93%	1.29%	1.09%	1.63%	n.a.
13-Jul-21	10,404,643.92	104.046439	-7.18%	3.82%	0.85%	1.63%	n.a.
12-Jul-21	10,403,115.64	104.031156	-7.26%	5.18%	1.71%	3.52%	n.a.
11-Jul-21	10,304,769.65	103.047697	-18.49%	-0.57%	-2.96%	1.64%	n.a.
10-Jul-21	10,303,462.03	103.034620	-14.54%	1.19%	2.18%	1.64%	n.a.
9-Jul-21	10,302,154.35	103.021544	-21.89%	1.83%	2.16%	-0.93%	n.a.
8-Jul-21	10,431,150.19	104.311502	-14.58%	6.92%	3.33%	1.44%	n.a.
7-Jul-21	10,439,151.07	104.391511	-3.39%	7.44%	2.25%	0.19%	n.a.
6-Jul-21	10,511,269.46	105.112695	5.39%	11.72%	6.43%	3.00%	n.a.
5-Jul-21	10,437,657.56	104.376576	-3.08%	9.49%	8.89%	2.54%	n.a.
4-Jul-21	10,389,038.16	103.890382	-8.63%	8.67%	-0.01%	1.63%	n.a.
3-Jul-21	10,387,696.44	103.876964	-13.12%	2.58%	-0.02%	1.63%	n.a.
2-Jul-21	10,386,354.66	103.863547	-13.18%	6.99%	-0.03%	0.96%	n.a.
1-Jul-21	10,419,114.96	104.191150	-5.91%	-0.61%	1.27%	2.33%	n.a.
30-Jun-21	10,381,604.14	103.816041	5.99%	-2.73%	-0.15%	0.65%	n.a.
29-Jun-21	10,430,566.58	104.305666	-4.81%	0.15%	4.22%	2.62%	n.a.
28-Jun-21	10,377,638.34	103.776383	-10.86%	9.31%	2.33%	-0.09%	n.a.
27-Jun-21	10,464,052.96	104.640530	-0.72%	6.82%	3.33%	1.61%	n.a.
26-Jun-21	10,463,210.11	104.632101	-5.95%	3.57%	-0.06%	1.61%	n.a.
25-Jun-21	10,462,366.07	104.623661	-6.30%	13.08%	-0.06%	0.89%	n.a.
24-Jun-21	10,498,446.70	104.984467	-0.65%	16.77%	1.36%	1.58%	n.a.
23-Jun-21	10,498,446.70	104.984467	-4.47%	16.82%	-0.03%	0.23%	n.a.
22-Jun-21	10,568,375.05	105.683751	2.76%	21.00%	2.15%	1.57%	n.a.
21-Jun-21	10,568,375.05	105.683751	2.95%	15.56%	3.89%	2.18%	n.a.
20-Jun-21	10,536,559.72	105.365597	-1.10%	12.97%	8.08%	1.59%	n.a.
19-Jun-21	10,535,713.03	105.357130	4.16%	5.20%	10.38%	1.59%	n.a.

1-Jan-25	24,787,456.03	107.551302	40.70%	33.51%	14.63%	2.98%	2.07%
31-Dec-24	24,782,622.37	107.530329	40.69%	33.53%	14.63%	2.77%	1.96%
30-Dec-24	24,803,255.16	107.619853	42.45%	34.15%	14.99%	6.19%	3.65%
18-Jun-21	10,534,866.31	105.348663	4.32%	12.60%	10.38%	1.41%	n.a.
17-Jun-21	10,543,776.69	105.437767	6.68%	12.97%	10.77%	4.09%	n.a.
16-Jun-21	10,413,088.85	104.130889	-8.46%	5.38%	6.68%	-1.38%	n.a.
15-Jun-21	10,566,044.49	105.660445	9.38%	14.38%	9.58%	5.65%	n.a.
14-Jun-21	10,353,882.63	103.538826	-15.13%	-2.46%	-4.72%	-2.57%	n.a.
13-Jun-21	10,567,026.52	105.670265	14.91%	9.65%	9.63%	1.59%	n.a.
12-Jun-21	10,566,181.08	105.661811	17.72%	11.00%	3.96%	1.59%	n.a.
11-Jun-21	10,565,335.61	105.653356	17.62%	9.64%	3.97%	2.27%	n.a.
10-Jun-21	10,529,287.71	105.292877	17.12%	15.49%	2.61%	0.36%	n.a.
9-Jun-21	10,592,700.48	105.927005	26.00%	19.27%	9.38%	2.24%	n.a.
8-Jun-21	10,557,703.27	105.577033	19.06%	17.26%	4.58%	3.29%	n.a.
7-Jun-21	10,468,353.65	104.683537	8.70%	5.07%	5.24%	1.65%	n.a.
6-Jun-21	10,464,942.20	104.649422	8.41%	6.94%	2.82%	1.61%	n.a.
5-Jun-21	10,464,106.65	104.641067	12.45%	14.90%	6.64%	1.61%	n.a.
4-Jun-21	10,463,271.06	104.632711	16.42%	4.29%	6.64%	0.86%	n.a.
3-Jun-21	10,500,913.21	105.009132	8.80%	6.55%	8.15%	1.60%	n.a.
2-Jun-21	10,500,079.16	105.000792	17.71%	6.56%	3.64%	2.16%	n.a.
1-Jun-21	10,470,007.22	104.700072	-4.83%	4.86%	1.89%	4.29%	n.a.
31-May-21	10,330,758.73	103.307587	-20.84%	-3.18%	-1.83%	-1.16%	n.a.
30-May-21	10,471,969.34	104.719693	-4.40%	8.76%	0.39%	1.60%	n.a.
29-May-21	10,471,124.79	104.711248	19.98%	8.96%	3.96%	1.60%	n.a.
28-May-21	10,470,280.20	104.702802	4.81%	5.36%	3.96%	0.73%	n.a.
27-May-21	10,514,591.66	105.145917	3.58%	2.87%	5.71%	1.54%	n.a.
26-May-21	10,516,805.29	105.168053	22.91%	3.05%	3.77%	1.83%	n.a.
25-May-21	10,504,031.00	105.040310	24.50%	2.37%	4.54%	0.94%	n.a.
24-May-21	10,537,123.58	105.371236	28.52%	2.17%	3.59%	1.44%	n.a.
23-May-21	10,544,474.49	105.444745	29.49%	1.86%	11.29%	1.61%	n.a.
22-May-21	10,542,791.43	105.427914	18.51%	4.36%	15.87%	1.51%	n.a.
21-May-21	10,546,114.69	105.461147	17.46%	12.68%	16.04%	2.47%	n.a.
20-May-21	10,499,811.96	104.998120	-3.22%	13.46%	14.24%	1.63%	n.a.
19-May-21	10,497,629.79	104.976298	11.25%	13.39%	4.44%	1.81%	n.a.
18-May-21	10,486,181.29	104.861813	9.63%	12.77%	6.49%	1.59%	n.a.
17-May-21	10,486,035.13	104.860351	9.71%	14.33%	12.86%	0.00%	n.a.
16-May-21	10,485,169.60	104.851696	9.70%	9.65%	6.22%	0.00%	n.a.
15-May-21	10,484,304.04	104.843040	0.69%	0.44%	8.61%	0.00%	n.a.
14-May-21	10,439,085.25	104.390853	-5.06%	6.97%	6.88%	0.00%	n.a.
13-May-21	10,414,516.87	104.145169	-5.17%	-2.80%	5.95%	0.00%	n.a.
12-May-21	10,414,516.87	104.145169	-7.74%	-2.75%	6.09%	0.00%	n.a.
11-May-21	10,383,199.73	103.831997	4.16%	-4.51%	4.82%	0.00%	n.a.
10-May-21	10,371,032.94	103.710329	2.82%	1.15%	4.43%	0.00%	n.a.
9-May-21	10,394,860.66	103.948607	15.37%	-2.55%	5.62%	0.00%	n.a.
8-May-21	10,393,991.31	103.939913	1.49%	3.51%	3.69%	0.00%	n.a.
7-May-21	10,393,121.92	103.931219	5.50%	0.06%	3.65%	0.00%	n.a.
6-May-21	10,358,101.10	103.581011	17.28%	3.75%	2.36%	0.00%	n.a.
5-May-21	10,323,936.77	103.239368	-7.60%	1.80%	7.63%	0.00%	n.a.
4-May-21	10,425,500.91	104.255009	4.34%	7.80%	6.79%	0.00%	n.a.
3-May-21	10,349,450.65	103.494507	-4.39%	-3.27%	3.88%	0.00%	n.a.
2-May-21	10,511,696.28	105.116963	14.57%	5.26%	10.27%	0.00%	n.a.
1-May-21	10,510,831.83	105.108318	14.57%	7.73%	10.27%	0.00%	n.a.
30-Apr-21	10,509,967.34	105.099673	21.96%	2.77%	10.29%	0.00%	n.a.
29-Apr-21	10,301,948.88	103.019489	-1.87%	-3.91%	2.17%	0.00%	n.a.
28-Apr-21	10,429,055.75	104.290558	5.93%	3.54%	9.79%	0.00%	n.a.
27-Apr-21	10,483,702.28	104.837023	2.18%	6.77%	10.84%	0.00%	n.a.
26-Apr-21	10,322,437.07	103.224371	-16.32%	-5.61%	7.90%	0.00%	n.a.
25-Apr-21	10,296,646.73	102.966467	-19.20%	-5.24%	13.94%	0.00%	n.a.
24-Apr-21	10,295,809.75	102.958098	-23.40%	-8.56%	13.96%	0.00%	n.a.
23-Apr-21	10,294,972.74	102.949727	-24.94%	2.26%	13.97%	0.00%	n.a.
22-Apr-21	10,384,782.65	103.847827	-9.50%	14.40%	17.66%	0.00%	n.a.
21-Apr-21	10,396,951.87	103.969519	7.92%	15.18%	3.69%	0.00%	n.a.
20-Apr-21	10,527,692.13	105.276921	30.20%	23.02%	8.85%	0.00%	n.a.
19-Apr-21	10,401,493.03	104.014930	15.48%	1.07%	17.68%	0.00%	n.a.
18-Apr-21	10,403,875.14	104.038751	15.86%	4.91%	17.46%	0.00%	n.a.
17-Apr-21	10,403,052.94	104.030529	18.87%	14.36%	6.58%	0.00%	n.a.
16-Apr-21	10,402,230.71	104.022307	9.59%	4.49%	6.60%	0.00%	n.a.
15-Apr-21	10,478,337.83	104.783378	0.18%	12.57%	9.64%	0.00%	n.a.
14-Apr-21	10,482,695.89	104.826959	19.04%	12.88%	20.34%	0.00%	n.a.
13-Apr-21	10,458,992.13	104.589921	-0.48%	11.54%	18.11%	0.00%	n.a.
12-Apr-21	10,481,189.32	104.811893	2.19%	13.05%	19.44%	0.00%	n.a.
11-Apr-21	10,347,841.43	103.478414	-13.10%	5.15%	13.55%	0.00%	n.a.

1-Jan-25	24,787,456.03	107.551302	40.70%	33.51%	14.63%	2.98%	2.07%
31-Dec-24	24,782,622.37	107.530329	40.69%	33.53%	14.63%	2.77%	1.96%
30-Dec-24	24,803,255.16	107.619853	42.45%	34.15%	14.99%	6.19%	3.65%
10-Apr-21	10,347,016.42	103.470164	-0.50%	5.24%	3.60%	0.00%	n.a.
9-Apr-21	10,346,191.37	103.461914	-10.72%	5.57%	3.61%	0.00%	n.a.
8-Apr-21	10,463,143.93	104.631439	5.52%	4.78%	5.03%	0.00%	n.a.
7-Apr-21	10,428,010.10	104.280101	-5.35%	2.72%	4.70%	0.00%	n.a.
6-Apr-21	10,293,918.98	102.939190	-9.64%	-5.03%	-1.63%	0.00%	n.a.
5-Apr-21	10,471,352.41	104.713524	11.27%	15.35%	1.80%	0.00%	n.a.
4-Apr-21	10,470,133.64	104.701336	11.23%	7.98%	5.48%	0.00%	n.a.
3-Apr-21	10,469,252.29	104.692523	-2.16%	8.04%	5.49%	0.00%	n.a.
2-Apr-21	10,468,370.91	104.683709	-4.00%	8.02%	5.51%	0.00%	n.a.
1-Apr-21	10,467,489.49	104.674895	0.89%	8.03%	5.52%	0.00%	n.a.
31-Mar-21	10,404,205.63	104.042056	-16.12%	4.38%	3.09%	0.00%	n.a.
30-Mar-21	10,399,959.31	103.999593	-5.97%	4.20%	-3.20%	0.00%	n.a.
29-Mar-21	10,460,114.28	104.601143	1.14%	11.67%	6.37%	0.00%	n.a.
28-Mar-21	10,546,789.52	105.467895	11.34%	15.14%	3.66%	0.00%	n.a.
27-Mar-21	10,545,911.48	105.459115	5.17%	20.28%	15.60%	0.00%	n.a.
26-Mar-21	10,545,033.41	105.450334	8.86%	30.99%	15.58%	0.00%	n.a.
25-Mar-21	10,581,307.03	105.813070	6.40%	33.27%	17.05%	0.00%	n.a.
24-Mar-21	10,594,135.92	105.941359	30.07%	34.13%	17.58%	0.00%	n.a.
23-Mar-21	10,549,139.34	105.491393	38.60%	31.48%	10.88%	0.00%	n.a.
22-Mar-21	10,411,180.71	104.111807	22.30%	1.57%	8.16%	0.00%	n.a.
21-Mar-21	10,352,681.25	103.526813	15.45%	-1.78%	20.56%	0.00%	n.a.
20-Mar-21	10,351,793.59	103.517936	-13.16%	18.55%	25.13%	0.00%	n.a.
19-Mar-21	10,350,905.88	103.509059	-5.96%	18.02%	25.11%	0.00%	n.a.
18-Mar-21	10,324,901.07	103.249011	9.71%	0.43%	24.06%	0.00%	n.a.
17-Mar-21	10,402,218.91	104.022190	-0.62%	5.07%	13.13%	0.00%	n.a.
16-Mar-21	10,558,750.21	105.587502	24.95%	14.37%	19.28%	0.00%	n.a.
15-Mar-21	10,401,934.81	104.019348	6.62%	20.67%	15.64%	0.00%	n.a.
14-Mar-21	10,545,125.96	105.451260	23.57%	27.41%	21.46%	0.00%	n.a.
13-Mar-21	10,544,246.35	105.442464	23.88%	28.02%	18.68%	0.00%	n.a.
12-Mar-21	10,543,366.71	105.433667	23.66%	27.17%	18.67%	0.00%	n.a.
11-Mar-21	10,433,333.28	104.333333	10.98%	5.65%	14.27%	0.00%	n.a.
10-Mar-21	10,520,885.76	105.208858	22.05%	10.87%	17.89%	0.00%	n.a.
9-Mar-21	10,415,897.95	104.158980	4.02%	4.77%	16.12%	0.00%	n.a.
8-Mar-21	10,474,071.64	104.740716	10.84%	9.76%	18.01%	0.00%	n.a.
7-Mar-21	10,376,172.00	103.761720	-0.42%	2.40%	10.93%	0.00%	n.a.
6-Mar-21	10,375,285.31	103.752853	19.25%	-2.90%	10.03%	0.00%	n.a.
5-Mar-21	10,374,398.58	103.743986	4.70%	2.58%	10.03%	0.00%	n.a.
4-Mar-21	10,487,882.48	104.878825	18.28%	9.34%	14.60%	0.00%	n.a.
3-Mar-21	10,502,943.48	105.029435	20.12%	10.30%	5.08%	0.00%	n.a.
2-Mar-21	10,459,875.38	104.598754	15.16%	7.84%	3.45%	0.00%	n.a.
1-Mar-21	10,543,904.07	105.439041	25.20%	12.86%	10.33%	0.00%	n.a.
28-Feb-21	10,451,203.32	104.512033	14.43%	-1.83%	16.56%	0.00%	n.a.
27-Feb-21	10,450,294.58	104.502946	22.18%	8.98%	18.26%	0.00%	n.a.
26-Feb-21	10,449,385.82	104.493858	18.77%	-0.18%	18.22%	0.00%	n.a.
25-Feb-21	10,501,300.08	105.013001	35.25%	20.72%	20.32%	0.00%	n.a.
24-Feb-21	10,468,778.27	104.687783	52.74%	18.81%	14.76%	0.00%	n.a.
23-Feb-21	10,525,959.33	105.259593	59.83%	22.26%	7.03%	0.00%	n.a.
22-Feb-21	10,338,597.46	103.385975	37.27%	11.06%	13.68%	0.00%	n.a.
21-Feb-21	10,224,722.98	102.247230	23.61%	-2.89%	9.09%	0.00%	n.a.
20-Feb-21	10,223,798.64	102.237986	-18.81%	1.08%	9.11%	0.00%	n.a.
19-Feb-21	10,222,874.26	102.228743	-18.78%	22.82%	9.05%	0.00%	n.a.
18-Feb-21	10,465,014.96	104.650150	50.82%	44.76%	18.86%	0.00%	n.a.
17-Feb-21	10,401,837.72	104.018377	42.21%	40.85%	#VALUE!	0.00%	n.a.
16-Feb-21	10,243,190.18	102.431902	-8.77%	30.99%	0.00%	0.00%	n.a.
15-Feb-21	10,407,486.38	104.074864	10.75%	20.01%	0.00%	0.00%	n.a.
14-Feb-21	10,346,539.32	103.465393	3.71%	16.11%	0.00%	0.00%	n.a.
13-Feb-21	10,345,620.08	103.456201	34.53%	20.04%	0.00%	0.00%	n.a.
12-Feb-21	10,344,700.79	103.447008	30.66%	20.02%	0.00%	0.00%	n.a.
11-Feb-21	10,341,302.54	103.413025	31.55%	15.78%	0.00%	0.00%	n.a.
10-Feb-21	10,342,248.85	103.422489	30.09%	15.87%	0.00%	0.00%	n.a.
9-Feb-21	10,340,025.52	103.400255	0.31%	15.77%	0.00%	0.00%	n.a.
8-Feb-21	10,333,598.63	103.335986	-0.30%	15.53%	0.00%	0.00%	n.a.
7-Feb-21	10,381,615.26	103.816153	5.50%	22.10%	0.00%	0.00%	n.a.
6-Feb-21	10,381,615.26	103.816153	8.62%	21.40%	0.00%	0.00%	n.a.
5-Feb-21	10,379,779.67	103.797797	5.22%	16.61%	0.00%	0.00%	n.a.
4-Feb-21	10,213,660.69	102.136607	-24.66%	5.33%	0.00%	0.00%	n.a.
3-Feb-21	10,334,487.03	103.344870	0.46%	12.64%	0.00%	0.00%	n.a.
2-Feb-21	10,332,659.36	103.326594	0.39%	12.58%	0.00%	0.00%	n.a.
1-Feb-21	10,332,107.38	103.321074	0.48%	-2.39%	0.00%	0.00%	n.a.

1-Jan-25	24,787,456.03	107.551302	40.70%	33.51%	14.63%	2.98%	2.07%
31-Dec-24	24,782,622.37	107.530329	40.69%	33.53%	14.63%	2.77%	1.96%
30-Dec-24	24,803,255.16	107.619853	42.45%	34.15%	14.99%	6.19%	3.65%
31-Jan-21	10,331,148.04	103.311480	0.51%	-2.38%	0.00%	0.00%	n.a.
30-Jan-21	10,329,911.04	103.299110	0.51%	2.84%	0.00%	0.00%	n.a.
29-Jan-21	10,328,673.92	103.286739	-17.88%	17.41%	0.00%	0.00%	n.a.
28-Jan-21	10,263,194.97	102.631950	-4.15%	16.01%	0.00%	0.00%	n.a.
27-Jan-21	10,290,668.32	102.906683	-18.84%	17.68%	0.00%	0.00%	n.a.
26-Jan-21	10,205,623.11	102.056231	6.03%	12.50%	0.00%	0.00%	n.a.
25-Jan-21	10,033,818.34	100.338183	-14.50%	-4.06%	0.00%	0.00%	n.a.
24-Jan-21	10,032,571.07	100.325711	-14.60%	-18.47%	0.00%	0.00%	n.a.
23-Jan-21	10,031,323.56	100.313236	-14.69%	1.83%	0.00%	0.00%	n.a.
22-Jan-21	10,030,076.29	100.300763	-28.84%	1.80%	0.00%	0.00%	n.a.
21-Jan-21	10,384,349.01	103.843490	21.29%	23.43%	0.00%	0.00%	n.a.
20-Jan-21	10,383,101.74	103.831017	65.43%	23.33%	0.00%	0.00%	n.a.
19-Jan-21	10,045,447.17	100.454472	37.14%	0.00%	0.00%	0.00%	n.a.
18-Jan-21	10,053,043.20	100.530432	38.16%	0.00%	0.00%	0.00%	n.a.
17-Jan-21	10,317,568.39	103.175684	71.26%	0.00%	0.00%	0.00%	n.a.
16-Jan-21	10,316,321.12	103.163211	29.01%	0.00%	0.00%	0.00%	n.a.
15-Jan-21	10,315,073.85	103.150739	28.43%	0.00%	0.00%	0.00%	n.a.
14-Jan-21	10,060,115.52	100.601155	5.40%	0.00%	0.00%	0.00%	n.a.
13-Jan-21	10,090,414.31	100.904143	9.15%	0.00%	0.00%	0.00%	n.a.
12-Jan-21	10,079,935.35	100.799354	0.00%	0.00%	0.00%	0.00%	n.a.
11-Jan-21	10,092,612.09	100.926121	1.60%	0.00%	0.00%	0.00%	n.a.
10-Jan-21	10,337,359.56	103.373596	31.21%	0.00%	0.00%	0.00%	n.a.
9-Jan-21	10,336,112.29	103.361123	31.36%	0.00%	0.00%	0.00%	n.a.
8-Jan-21	10,334,865.02	103.348650	38.51%	0.00%	0.00%	0.00%	n.a.
7-Jan-21	10,308,606.90	103.086069	33.94%	0.00%	0.00%	0.00%	n.a.
6-Jan-21	10,335,415.09	103.354151	27.87%	0.00%	0.00%	0.00%	n.a.
5-Jan-21	10,424,996.15	104.249962	36.06%	0.00%	0.00%	0.00%	n.a.
4-Jan-21	10,330,554.31	103.305543	24.81%	0.00%	0.00%	0.00%	n.a.
3-Jan-21	10,329,307.04	103.293070	24.75%	0.00%	0.00%	0.00%	n.a.
2-Jan-21	10,328,059.77	103.280598	-5.26%	0.00%	0.00%	0.00%	n.a.
1-Jan-21	10,326,812.50	103.268125	-5.27%	0.00%	0.00%	0.00%	n.a.
31-Dec-20	10,325,565.23	103.255652	5.17%	0.00%	0.00%	0.00%	n.a.
30-Dec-20	10,482,757.70	104.827577	53.50%	0.00%	0.00%	0.00%	n.a.
29-Dec-20	10,298,347.66	102.983477	36.31%	0.00%	0.00%	0.00%	n.a.
28-Dec-20	10,452,494.67	104.524947	55.04%	0.00%	0.00%	0.00%	n.a.
27-Dec-20	10,155,331.78	101.553318	18.87%	0.00%	0.00%	0.00%	n.a.
26-Dec-20	10,154,866.75	101.548668	6.47%	0.00%	0.00%	0.00%	n.a.
25-Dec-20	10,154,401.60	101.544016	-22.61%	0.00%	0.00%	0.00%	n.a.
24-Dec-20	10,153,936.57	101.539366	18.57%	0.00%	0.00%	0.00%	n.a.
23-Dec-20	10,273,603.22	102.736032	33.22%	0.00%	0.00%	0.00%	n.a.
22-Dec-20	10,205,721.99	102.057220	25.12%	0.00%	0.00%	0.00%	n.a.
21-Dec-20	9,853,184.07	98.531841	-17.82%	0.00%	0.00%	0.00%	n.a.
20-Dec-20	9,747,850.05	97.478501	0.00%	0.00%	0.00%	0.00%	n.a.
19-Dec-20	9,747,294.23	97.472942	0.00%	0.00%	0.00%	0.00%	n.a.
18-Dec-20	9,746,738.41	97.467384	0.00%	0.00%	0.00%	0.00%	n.a.
17-Dec-20	10,076,106.22	100.761062	0.00%	0.00%	0.00%	0.00%	n.a.
16-Dec-20	10,079,529.17	100.795292	0.00%	0.00%	0.00%	0.00%	n.a.
15-Dec-20	10,015,635.15	100.156352	0.00%	0.00%	0.00%	0.00%	n.a.
14-Dec-20	10,015,084.58	100.150846	0.00%	0.00%	0.00%	0.00%	n.a.
13-Dec-20	10,079,897.53	100.798975	0.00%	0.00%	0.00%	0.00%	n.a.
12-Dec-20	10,079,341.71	100.793417	0.00%	0.00%	0.00%	0.00%	n.a.
11-Dec-20	10,078,785.89	100.787859	0.00%	0.00%	0.00%	0.00%	n.a.
10-Dec-20	10,076,429.93	100.764299	0.00%	0.00%	0.00%	0.00%	n.a.
9-Dec-20	10,017,755.08	100.177551	0.00%	0.00%	0.00%	0.00%	n.a.
8-Dec-20	10,028,816.36	100.288164	0.00%	0.00%	0.00%	0.00%	n.a.
7-Dec-20	10,103,944.83	101.039448	0.00%	0.00%	0.00%	0.00%	n.a.
6-Dec-20	10,124,874.91	101.248749	0.00%	0.00%	0.00%	0.00%	n.a.
5-Dec-20	10,124,134.39	101.241344	0.00%	0.00%	0.00%	0.00%	n.a.
4-Dec-20	10,123,393.87	101.233939	0.00%	0.00%	0.00%	0.00%	n.a.
3-Dec-20	10,372,925.97	103.729260	0.00%	0.00%	0.00%	0.00%	n.a.
2-Dec-20	10,371,721.99	103.717220	0.00%	0.00%	0.00%	0.00%	n.a.
1-Dec-20	10,281,903.60	102.819036	0.00%	0.00%	0.00%	0.00%	n.a.
30-Nov-20	10,041,240.85	100.412409	0.00%	0.00%	0.00%	0.00%	n.a.
29-Nov-20	9,999,949.06	99.999491	0.00%	0.00%	0.00%	0.00%	n.a.
28-Nov-20	10,000,074.61	100.000746	0.00%	0.00%	0.00%	0.00%	n.a.
27-Nov-20	10,000,200.16	100.002002	0.00%	0.00%	0.00%	0.00%	n.a.
26-Nov-20	3,484,902.08	101.011654	0.00%	0.00%	0.00%	0.00%	n.a.
25-Nov-20	3,569,600.47	103.466680	0.00%	0.00%	0.00%	0.00%	n.a.
24-Nov-20	3,450,454.81	100.013183	0.00%	0.00%	0.00%	0.00%	n.a.

1-Jan-25	24,787,456.03	107.551302	40.70%	33.51%	14.63%	2.98%	2.07%
31-Dec-24	24,782,622.37	107.530329	40.69%	33.53%	14.63%	2.77%	1.96%
30-Dec-24	24,803,255.16	107.619853	42.45%	34.15%	14.99%	6.19%	3.65%
23-Nov-20	3,450,180.51	100.005232	0.00%	0.00%	0.00%	0.00%	n.a.
22-Nov-20	3,449,752.24	99.992819	0.00%	0.00%	0.00%	0.00%	n.a.
21-Nov-20	3,449,876.12	99.996409	0.00%	0.00%	0.00%	0.00%	n.a.
20-Nov-20	3,450,000.00	100.000000	0.00%	0.00%	0.00%	0.00%	n.a.

